

# **LITTLE MOWBRAY AND ROSEBANK IMPROVEMENT DISTRICT NPC (LMRID)**

## **BUSINESS PLAN**

**01 JULY 2026 to 30 JUNE 2031**



Prepared by:  
Little Mowbray and Rosebank Improvement District NPC (LMRID)  
NPC Reg. No. 2016/311084/08  
2 Raleigh Road, Little Mowbray 7700  
Tel: 08610 56743  
Email: [info@lmrid.capetown](mailto:info@lmrid.capetown)



This business plan is available at [www.lmrid.capetown](http://www.lmrid.capetown)

## **CONTENTS**

### **PART A: MOTIVATION REPORT**

Introduction.....	3
Geographical Area.....	4
Strategic Objectives.....	7
Consistency with the City’s Integrated Development Plan (IDP) .....	7
Core Values of the LMRID .....	8
Proposed Services and/or Projects .....	9
Improving Public Safety .....	9
Maintenance and Cleansing .....	11
Environmental Development.....	12
Promotion of Social and Economic Development .....	12
Communication.....	13
Financial Impact of the CID.....	14
Proposed Management Structure .....	16
Permissible Amendments to the Business Plan without Further Consent .....	16
List of All Rateable Properties Within the CID .....	17

### **PART B: FIVE-YEAR TERM IMPLEMENTATION PLAN**

### **PART C: FIVE-YEAR BUDGET**

## **PART A: MOTIVATION REPORT**

### **Introduction**

The Little Mowbray and Rosebank Improvement District (LMRID) is a community-driven venture, allowing the local community, property owners and local businesses to organise and fund improvements of this specific area within the City. LMRID, a non-profit company, carries out the improvements and upgrades proposed in its business plan, funded by an additional rate levied on rateable property, both commercial and residential, located within the CID.

The LMRID was founded in 2016 to provide supplementary and enhanced municipal services in close cooperation with the City of Cape Town. These include public safety, cleaning services, environmental upgrading, urban maintenance, and social upliftment. LMRID renewed its mandate with the City of Cape Town in 2020 for a second term which commenced in 2021. This Business Plan is in support of a third 5-year term commencing in 2026, aiming to continue and build on the achievements recognised over the first 10 years.

Although hard statistics are difficult to establish, we have managed to keep crime at very low levels, while keeping a tight control on vagrancy and illegal structures. We also run highly effective cleaning projects, doing two big weeding exercises per year, two graffiti cleanups per year, regular street cleaning with much of the material being composted at a pilot project base at Rhodes High School. We also maintain 25 “guerilla gardens” and the Sunshine Path (along the Liesbeek Canal).

The LMRID will continue to be run by volunteer directors, working in close coordination with other CIDs, especially GSCID who we border. Our low-key, low-cost approach appears to be successful in maintaining the core CID functions at optimal quality.

**Registered name:** Little Mowbray and Rosebank Improvement District NPC (LMRID)

**Registration number:** 2016/311084/08

**VAT No.:** 4250275015

**Address:** 2 Raleigh Road, Little Mowbray 7700

**Email:** [info@lmrid.capetown](mailto:info@lmrid.capetown)

**Tel.:** 08610 56743

<b>Board of Directors:</b>	<b>Portfolio(s):</b>
Simon Birch	Chairperson
Patsy Taylor	Cleansing, Greening & Social
Dave Sivertsen	Public Safety
Sue Judd	Finance & Company Secretary

## **Geographical Area**

**West Boundary:** Liesbeek Parkway and Black River Parkway off-ramp (up to the road reserve).

**North Boundary:** Settler's way (up to the road reserve).

**East Boundary:** Kromboom Parkway (up to the road reserve) Klipfontein, Sawkins, Campground Road (incl. road reserve (Rondebosch Common excluded)).

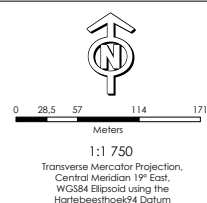
**South Boundary:** Alma Road (including properties on both sides (Rustenburg High School excluded)).





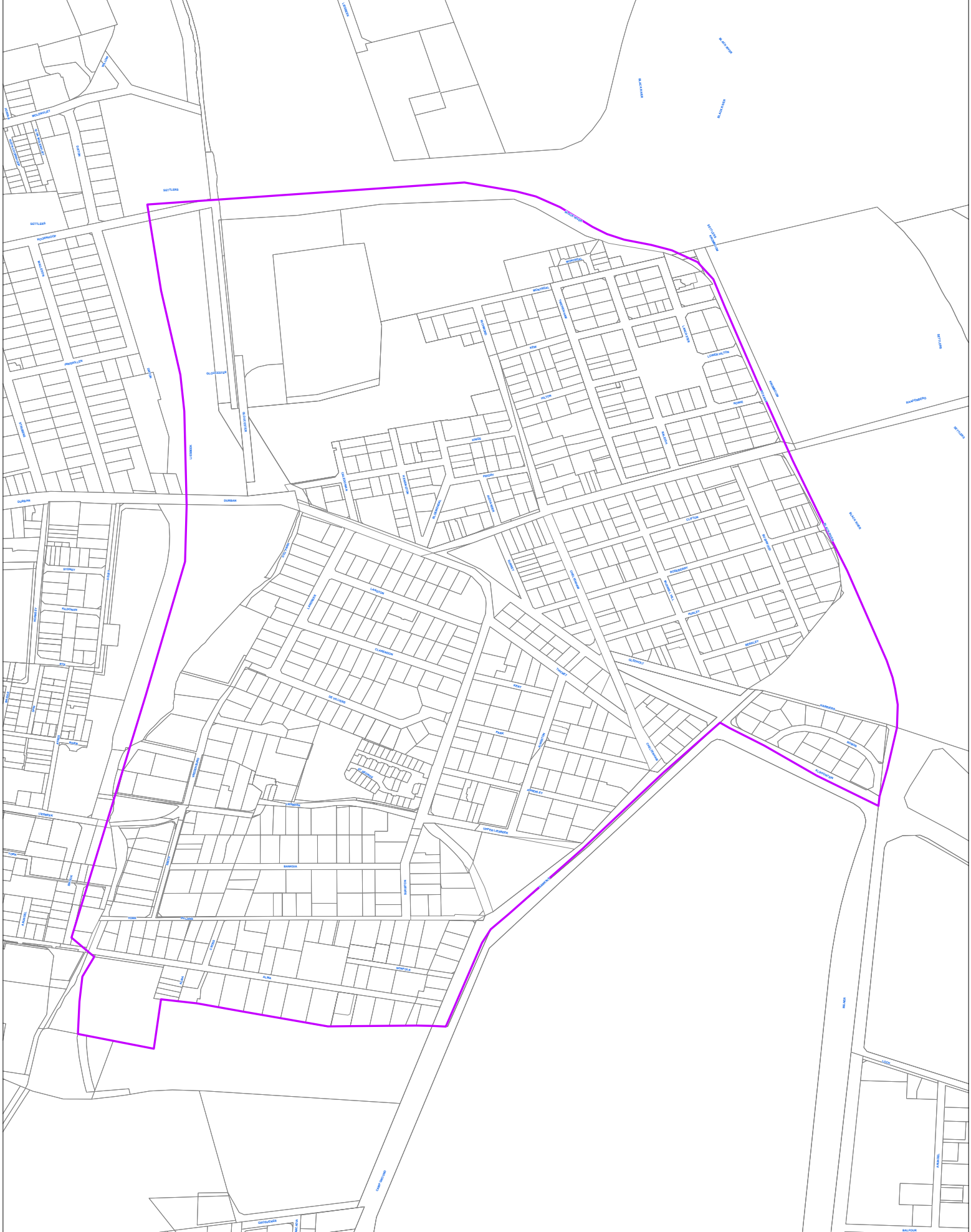
**THIS MAP WAS COMPILED BY:**  
**CORPORATE GIS**  
Information & Knowledge  
Management  
Contact Information: Tel: +27 21 487 2711  
Fax: +27 21 487 2821  
[city.maps@cape.gov.za](mailto:city.maps@cape.gov.za)  
Date: 28th August 2025

Please Note:  
- Every effort has been made to ensure the accuracy of information in this map at the time of publication.  
- The spatial data portrayed in this map is as current, accurate and complete as provided by the various line departments responsible for the maintenance of these datasets.  
- The City of Cape Town accepts no responsibility for, and will not be liable for, any errors or omissions contained herein.



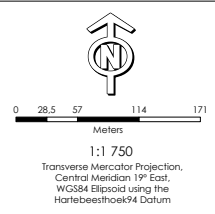
**LITTLE MOWBRAY  
AND ROSEBANK  
IMPROVEMENT DISTRICT**





**THIS MAP WAS COMPILED BY:**  
**CORPORATE GIS**  
Information & Knowledge  
Management  
Contact Information: Tel: +27 21 487 2711  
Fax: +27 21 487 2821  
[city.maps@capetown.gov.za](mailto:city.maps@capetown.gov.za)  
Date: 28th August 2025

Please Note:  
- Every effort has been made to ensure the accuracy of information in this map at the time of publication.  
- The spatial data portrayed in this map is as current, accurate and complete as provided by the various line departments responsible for the maintenance of these datasets.  
- The City of Cape Town accepts no responsibility for, and will not be liable for, any errors or omissions contained herein.



**LITTLE MOWBRAY  
AND ROSEBANK  
IMPROVEMENT DISTRICT**

## **Strategic Objectives**

**Improving public safety:** by regular (daily) patrols covering the entire LMRID footprint, identifying new adults (and occasionally children) living on the streets, running clean-up operations to remove structures within the footprint but especially on the periphery (along the canal for instance) and participating in shared intelligence operations such as the Licence Plate User Group to identify criminal threats.

**Maintenance and cleansing:** street sweeping, graffiti removal and weed removal on a regular basis.

**Environmental development:** including but not limited to beautifying and upgrading public areas and facilities.

**Promoting social and economic development:** in an environmentally sustainable manner by engaging with eg Straatwerk in creating employment opportunities and assisting homeless to find employing and/or repatriating them to their home communities.

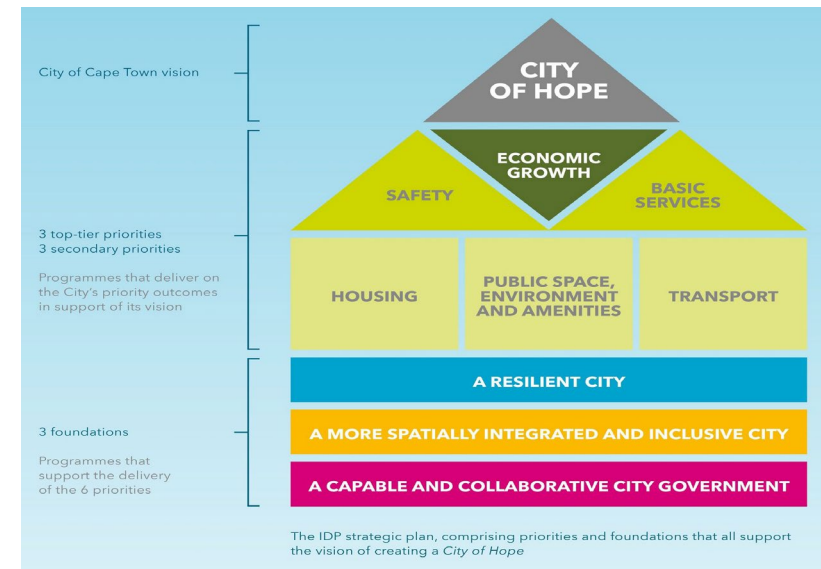
## **Consistency with the City's Integrated Development Plan (IDP)**

The IDP of the City rests on 3 foundations, 3 second tier priorities and 3 top tier priorities. Together this supports the vision for the City of Cape Town's City of Hope. The IDP is based on the City's 16 objectives linked to its priorities and foundations. The LMRID's supplementary and enhanced municipal services are consistent with the City's IDP objectives.

**Safety:** The public safety plan supports effective law enforcement to make communities safer and this is supported using technology such as License Plate Recognition. The public safety plan strengthens safety partnerships, thereby aiming for a crime prevention program consistent with Objectives 5 and 6 of the IDP.

**Cleaning:** The LMRID supplementary and enhanced cleaning service supports the objectives of a healthy and sustainable environment. This is specifically aimed at the public space and amenities of the City, creating quality public spaces whilst supporting environmental sustainability. This cleaning initiative is provided as a supplementary service, further enhancing the basic services provided by the City.

**Urban maintenance:** The LMRID urban maintenance position supports Objective 13 of the IDP through constant assessment of the state of road maintenance and associated infrastructure thereby assisting the City with service provision and creating a better environment for pedestrians, cyclists and vehicles alike.



**Social development:** The LMRID supports the City's Social Upliftment Strategy to find lasting solutions for Social Development, which includes supporting individuals to move from the street into places of safety.

## Core Values of the LMRID

- **Open Communication** - to be achieved through submission of annual reports and regularly publishing news updates to the local community.
- **Transparency and Accountability** - Maintaining open access to information through regular public reporting and the publishing of key documentation on the LMRID website.
- **Community Engagement** - regular meetings of the Board of Directors and the Annual General Meeting at which residents may discuss relevant issues and suggest relevant improvements in the area.



## **Proposed Services and/or Projects**

The purpose of the LMRID is to continue to contribute to the improvement of our neighbourhoods by means of continuing to create and manage a safer, cleaner and rejuvenated environment.

### **Improving Public Safety**

In order to continue improving public safety the LMRID will retain and improve its comprehensive and integrated public safety plan for the area in conjunction with the appointed service provider. These actions will include coordination and cooperation with:

- The Mowbray South African Police Service
- The Local Community Policing Forum
- Neighbourhood watch associations
- City of Cape Town Safety & Security Directorate
- Little Mowbray and Rosebank Improvement District

LMRID currently have no CCTV cameras, only License Plate Recognition (LPR) cameras which only track vehicles. We have from the outset intended to install CCTV monitoring to our security capabilities, but have not been able to do so due to the expense involved in monitoring and installation costs. Technological advances now make it feasible, and we intend proceeding with the installation of CCTV camera monitoring to our periphery, and installing monitoring facility at the existing control room.

A survey of the District has been conducted and we have established that full coverage requires 26 cameras. We intend to roll these in phases, with an initial phase of 9 cameras. The remaining 17 cameras will be installed as permitted by funding. We have four LPR cameras which capture and record all vehicular traffic passing through our CID.

Two vehicles patrol the LMRID area 24-hours, monitored by a control centre which responds to alerts from members of the public, and co-ordinates a response including other security services, such as SAPS. The vehicles are branded with LMRID logo, well-equipped, and manned by one Grade B patroller per vehicle. The patrollers have radios to communicate with the Control Centre, and work in two shifts per day from 7.00am to 7.00pm and 7.00pm to 7.00am.



### Assistance from the City of Cape Town

The LMRID further enhances its public safety initiative through close cooperation with the Safety and Security Directorate of the City of Cape Town to link in with their initiative to support a safer public environment. These services are often made available to CIDs by the City of Cape Town. These officers:

- Can enforce compliance with By-Laws and Policies.
- Have powers of arrest.
- Can Issue appropriate fines for the transgression of City By-laws.
- Enhance safety and security in the LMRID.

The above public safety services as planned is in support of the IDP, directly supporting the top-tier priorities of Safety and Basic Services. Then visioned public safety services support Objectives 5 (Effective law enforcement to make communities safer) and 6 (Strengthen partnerships for safer communities).

The cost of the public safety services over the five-year period is predicted below.

Description	Year 1	Year 2	Year 3	Year 4	Year 5	Total expenditure
Public Safety	2,423,550	2,593,200	2,774,721	2,968,950	3,176,780	13,937,201
CCTV Monitoring	20,000	25,000	28,000	30,000	33,200	136,200
CCTV - leasing cameras	0	0	0	0	0	0
<b>Total</b>	<b>2,443,550</b>	<b>2,618,200</b>	<b>2,802,721</b>	<b>2,998,950</b>	<b>3,209,980</b>	<b>14,073,401</b>

## Maintenance and Cleansing

LMRID will deploy a team of six people for two eight-hour shifts per week. The cleaners will wear bibs branded with LMRID logos provided to them. The team will cover all areas of the CID every fortnight.

The service will include:

- The removal of graffiti, leaves, and litter from gutters and pavements.
- Collections will be sorted into organic, recyclables and litter. Recycling is to be collected by the City's Free Recycling collection, and litter placed in bins for collection by City'
- Regular mechanical weeding and bi-annual spraying.
- Monitoring and reporting of maintenance issues to the City via the C3 system.



The Maintenance and Cleansing services as planned are consistent with Objective 4 of the IDP (Well managed and modernized infrastructure to support economic growth) specifically objective 4.7 promoting cleanliness and addressing illegal dumping. The LMRID will work closely with the City of Cape Town regarding solid waste objective 4.5 (excellence in waste service delivery programme) and 4.6 (waste minimisation).

The cost of the maintenance and cleansing services over the five-year term is summarised below:

Description	Year 1	Year 2	Year 3	Year 4	Year 5	Total expenditure
Maintenance & Cleansing	290,000	307,400	325,845	350,395	371,420	1,645,060



## Environmental Development

An environmental service provider will be employed to provide a gardener working for 3 hours per day, five days per week. The gardener will plant, weed and tend to all 25 “guerilla” gardens (triangles at street corners), the sunshine Path along the Liesbeek Canal and other small pockets of landscaping in the CID area.

The environmental objectives as planned are also in support of the delivery of basic services and processes in line with the Objective 4 of the IDP (Well-managed and modernised infrastructure to support economic growth).



The cost of the environmental development programme over the five-year term is summarised below:

Description	Year 1	Year 2	Year 3	Year 4	Year 5	Total expenditure
Environmental Development	63,000	66,780	70,785	75,030	79,530	355,125

## Promotion of Social and Economic Development

A Social Intervention Manager is employed part-time via a partnership agreement with the neighbouring CID, Groote Schuur City Improvement District (GSCID). As part of the Social Upliftment Programme, individuals encountered in the area will be referred to our Social Intervention Manager for potential work opportunities and assistance. Where possible, assistance will also be provided with re-homing, accessing medical care, and facilitating visits to the Department of Home Affairs. By supporting Straatwerk we are supporting vulnerable individuals seeking work opportunities and who are put onto the Ophelp upliftment program. Christmas vouchers are provided to assist the homeless.

The social upliftment initiatives as planned is in support of the IDP Social Development objectives. The LMRID supports the City's Social Upliftment Strategies to find lasting solutions for social development, which includes supporting NGOs that provide social services and where possible create employment opportunities. This is in support of Objective 15 (Building a more spatially integrated and inclusive City).

The cost of the social and economic development programme over the five-year term is summarised below:

Description	Year 1	Year 2	Year 3	Year 4	Year 5	Total expenditure
Social Upliftment	120,750	127,995	134,395	142,460	149,582	675,182

## Communication

LMRID will communicate with members via:

- The LMRID Website: [www.lmrid.capetown](http://www.lmrid.capetown)
- Advertisements for Annual General Meetings in the in daily newspapers (Cape Times and Die Burger)
- 
- Email Address: [info@lmrid.capetown](mailto:info@lmrid.capetown)
- An active WhatsApp group
- ARPs (additional ratepayers) can attend the first 30 minutes of Board meetings to liaise with the Board on specific matters
- Patrol vehicles are branded as LMRID vehicles for ease of identification although the patrollers wear company-provided uniforms
- Cleaning staff are identified with LMRID bibs
- LMRID signage boards at entry points identify the CID area

Description	Year 1	Year 2	Year 3	Year 4	Year 5	Total expenditure
Advertising	8,700	9,225	9,780	10,500	11,130	49,335

## Financial Impact of the CID

The Expenditure Budget for each year of the Business Plan:

YEAR	TOTAL EXPENDITURE	REVENUE (Funding Source: Additional Rates)	REVENUE (Other Funding Source e.g. Accumulated Surplus / Donations / Sponsorship / Parking etc.)	% INCREASE IN ADDITIONAL RATES REQUIREMENT
1	R 3,540,649	R 3,335,649	R 205,000	6.5%
2	R 3,829,220	R 3,552,470	R 276,750	6.5%
3	R 4,076,080	R 3,783,380	R 292,700	6.5%
4	R 4,269,800	R 4,029,300	R 240,500	6.5%
5	R 4,393,183	R 4,291,203	R 101,980	6.5%

In line with the City's CID By-law, the Board Body is required to review the proposed annual budget for each successive financial year by the date and in the format required by the City based on the specific needs of the area as set out in the Business Plan. The budget is funded by an additional property rate levied on the municipal valuation of all properties within the CID boundary.

The property rate is calculated by the City annually during the City's budget process. The additional rate is expressed as a Rand-in-the-rand and is calculated by dividing the budget total with the total municipal valuation of properties in the CID.

The impact on individual property owners in the outer years of the CID term may vary due to valuation fluctuations caused by successful valuation objections, subdivisions, new developments, court amendments, implementation of a new General Valuation Roll or Supplementary Valuation roll causing the CID budget to be spread over an increased or reduced total municipal valuation base. As a general principle, the anticipated annual increase in the additional rate within a CID is aligned with the approved annual budget of the CID. The CID By-law allows for differentiated additional rates between categories of rateable property and as such a residential and non-residential additional rate is applicable in the LMRID.

Property owners who receive a full or partial rates rebate will not pay additional rates. The budget and additional rates` are approved by Council with the City's budget and is applicable over a financial year, which starts on 1 July.



Individual contributions for residential and non-residential properties can be calculated as follows:

1. Municipal valuation x R 0.XXXXXX = Annual contribution (VAT excl.) – Note: R 0.XXXXXX represents the approved CID additional property rate.
2. Annual contribution (VAT excl.) ÷ 12 = Average monthly contribution (VAT excl.)
3. Average monthly contribution (VAT excl.) x 1.15 = Average monthly contribution (VAT incl.)

**Examples:**

Residential

$R3,000,000 \times R0.000800 = R2,400.00$  per annum excl. VAT

$R2,400.00 \div 12 = R200.00$  per month excl. VAT

$R200.00 \times 1.15 = R230.00$  per month incl. VAT

Non-Residential

$R7,000,000 \times R0.002074 = R14,518.00$  per annum excl. VAT

$R14,518.00 \div 12 = R1,209.83$  per month excl. VAT

$R1,209.83 \times 1.15 = R1,391.31$  per month incl. VAT

## **Proposed Management Structure**

The LMRID will continue to be governed by a Board of Directors, duly elected by the LMRID members. The Board of Directors consists of property owners within the LMRID boundaries. A political representative from City of Cape Town, appointed by the Executive Mayor, also attends Board meetings as an observer. We are a non-profit company registered as the Little Mowbray and Rosebank Improvement District NPC (LMRID), which is responsible for the management of the CID within the framework of the approved LMRID Business Plan.

Elected Board members take responsibility for the various portfolios in the company and regular board meetings allow the Directors to review current operations and apply corrective measures as required.

An Annual General Meeting (AGM) is held annually to review the performance of the LMRID and to confirm the mandate of the members. The Budget and Implementation Plan for the following year is presented and discussed for approval. This meeting provides the opportunity to elect new Directors to serve on the Board of the LMRID. Audited annual financial statements of the previous financial year are presented to show accountability, financial sustainability and performance. All of the above is subject to monitoring and oversight by various departments of the City of Cape Town (CCT). The CID Branch also advises, monitors, oversees and provides guidance on administrative, financial, operational and governance compliance.

## **Permissible Amendments to the Business Plan without Further Consent**

In the event that a determination is made to affect a material alteration to the geographical boundaries of the CID, such alteration shall be implemented in accordance with the formal process in Section 26 of the CID By-law. If an amendment to the geographical boundaries of a CID is deemed non-material and does not alter the terms of liability or the quantum of the additional rate levied, such amendment shall be undertaken in compliance with Section 25 of the City Improvement District By-law.

Where additional services are necessitated through collaboration with municipal departments, and such services are not expressly provided for in the motivation report but is deemed as enhanced and/or supplementary municipal services, the business plan may be amended without further consent, provided that the amendment is non-material and the process prescribed under Section 25 of the CID By-law is duly followed.

There are currently no further plans to investigate or explore significant changes to the strategy or operations of the LMRID and therefore none are noted here.

#### **List of All Rateable Properties Within the CID**

A list of all the rateable properties within the LMRID is attached as Annexure A.





## LITTLE MOWBRAY AND ROSEBANK IMPROVEMENT DISTRICT (LMRID)

### 5 YEAR IMPLEMENTATION PLAN

1st July 2026 to 30th June 2031

MANAGEMENT AND OPERATIONS											
NO.	ACTION STEPS	KEY PERFORMANCE INDICATOR	FREQUENCY Y per year	DURATION IN WEEKS, MONTHS OR YEARS					RESPONSIBLE		COMMENTS
				Y1	Y2	Y3	Y4	Y5			
1	Appointment of relevant service providers	Appointment of appropriately qualified service providers	Year 1	→					Manager and Board	Operational	Service providers to be appointed by means of a well documented fair, equitable, transparent and competitive process.  Review service provider appointment in last year of contract period by means of a well documented fair, equitable, transparent and competitive process.
2	Appointment of suitably qualified staff	Appointed suitably qualified staff	Year 1	→				→	Manager and Board	Operational	Well documented recruitment and selection process.  For contracted staff, review staff contracts in last year of contract period.
3	Appoint an auditor	IRBA registered auditor appointed	Year 1	→					Manager and Board	Operational	IRBA registered auditor appointed at the AGM.
4	Board meetings	Quarterly Board meetings.	Quarterly	4	4	4	4	4	Manager and Board	Annual Report	Quorum of directors present at every meeting. Feedback per portfolio. Keep minutes and file resolutions.
5	Monthly Progressive Income and Expenditure Report to CCT	Submit reports to the CID Branch by 15th	Monthly	12	12	12	12	12	Manager	Operational and Board	Refer to Finance Agreement. Submit reports to the CID Branch. Board to track budget implementation and institute corrective measures when required.
6	Audited Annual Financial Statements	Unqualified Audited Annual Financial Statements	Annually	1	1	1	1	1	Manager and Board	Board, Operational and Annual Report	Annual Financial Statements audited and signed by nominated Directors.
7	Submit Annual Financial Statements to City	Signed Annual Financial Statements submitted to City	Annually	1	1	1	1	1	Manager	Operational	Signed AFS submitted to the CID Branch by 31 August of each year.
8	Review arrears list	Report arrears to board	Quarterly	4	4	4	4	4	Manager	Operational	Board Members in arrears cannot participate in meetings and members in arrears cannot participate in AGMs.
9	Annual feedback to members at AGM	Host legally compliant AGM	Annually	1	1	1	1	1	Manager and Board	Board	Host successful AGM before 31 December.

NO.	ACTION STEPS	KEY PERFORMANCE INDICATOR	FREQUENCY Y per year	DURATION IN WEEKS, MONTHS OR YEARS					RESPONSIBLE		COMMENTS
				Y1	Y2	Y3	Y4	Y5			
10	Submit Annual Report and Annual Audited Financial Statements to Sub-council(s)	Submit AFS and annual report to Subcouncil within 3 months of AGM.	Annually	1	1	1	1	1	Manager and Board	Operational	Submit proof of submission to CID Branch.
11	CIPC Compliance • Annual Returns	Submit Annual Returns to CIPC within 30 business days of company registration date	Annually	1	1	1	1	1	Manager and Board	Operational	Submit proof of submission to CID Branch.
12	CIPC Compliance • Directors change • Auditors change • Company Secretary	Submit amendments to CIPC within 10 business days of the change	Ad-hoc	→	→	→	→	→	Manager and Board	Operational	Submit proof of submission to CID Branch.
13	Manage and monitor the service request process	Complete daily reports of service requests and monitor outstanding issues	Monthly	12	12	12	12	12	Manager and Board	Operational	Follow up with sub-council in respect of outstanding service requests
14	Participate in the review / development of the City's Integrated Development Plan	Annual submissions to Subcouncil Manager	Annually	1	1	1	1	1	Manager and Board	Operational	October to February of every year.
15	Participate in the City's Capital and Operating Budgets process	Annual submissions to Subcouncil Manager.	Annually	1	1	1	1	1	Manager and Board	Operational	By September of each year.
16	Maintain NPC membership	Up to date NPC membership register	Ad-hoc	→	→	→	→	→	Manager and Board	Operational	Maintain up to date membership list on website.
17	Submit an extension of term application	Submit a comprehensive extension of term application for approval by the members and the CCT Council.	In year 5					1	Manager and Board	Operational	Prepare a new business plan in the last year of term.
18	Annual Tax Compliance Status	Within one month after expiry date.	Annually	1	1	1	1	1	Manager and Board	Operational	Upload Tax Compliance Status via the eServices portal.
19	Adjustment Budget	Board approved adjustment budget	Annually	1	1	1	1	1	Manager and Board	Operational	Submit Board minutes and approved adjustment budget to the CCT by end of March.
20	First Board meeting post AGM	Allocate portfolios, elect Chairperson, sign Declaration of Interest, complete POPIA declaration	Annually	1	1	1	1	1	Manager and Board	Operational	All new directors to receive relevant documents.
21	Register with the Information Regulator of South Africa	Compliance with Information Regulator of South Africa	Year 1	→					Manager and Board	Operational	
22	VAT reconciliation and tax returns	Bi-monthly VAT returns and annual tax returns submitted to SARS on time	Bi-monthly	6	6	6	6	6	Manager and Board	Operational	
23	At least 90% of the approved budget is spent on each line item relating to the capital budget	Total capital expenditure as a percentage of total capital budget	Year 1- Year 5	→	→	→	→	→	Manager and Board	Annual Report	Total spend for each capital line item must exceed 90%
24	At least 90% of the approved budget is spent on each line item relating to the core services budget	Total core services (public safety, cleaning and maintenance, environmental and social development) expenditure as a percentage of total core services budget	Year 1- Year 5	→	→	→	→	→	Manager and Board	Annual Report	Total spend for each core services line item must exceed 90%

NO.	ACTION STEPS	KEY PERFORMANCE INDICATOR	FREQUENCY Y per year	DURATION IN WEEKS, MONTHS OR YEARS					RESPONSIBLE		COMMENTS
				Y1	Y2	Y3	Y4	Y5			
25	At least 90% of the approved budget is spent on each line item relating to the project budget	Total project expenditure as a percentage of total project budget	Year 1- Year 5	→	→	→	→	→	Manager and Board	Annual Report	Total spend for each project line item must exceed 90%

PUBLIC SAFETY											
NO.	ACTION STEPS	KEY PERFORMANCE INDICATOR	FREQUENCY Y per year	DURATION IN WEEKS, MONTHS OR YEARS					RESPONSIBLE	REPORTING	COMMENTS
				Y1	Y2	Y3	Y4	Y5			
1	Develop a Public Safety strategy and management plan	Up to date Public Safety Management and Strategy Plan	Year 1	→					Board, Manager and Service Provider	Annual Report	This is done comprehensively at the beginning of a new term and then modified continuously in conjunction with the SAPS, Local Authority and existing Public Safety service provider using their experience as well as available crime statistics
2	Appoint a Public Safety service provider(s)	Contracted PSIRA registered public safety service provider(s)	Year 1	→					Board	Board	The Public Safety service provider(s) could include Public Safety Patrols, Control Room services and CCTV Monitoring through a fair, equitable, transparent and competitive process
3	Review and approve the Public Safety strategy and management plan	Approved Public Safety strategy and management plan	Annual	1	1	1	1	1	Board and Manager	Annual Report	Clear deliverables and defined performance indicators to guide safety services by the appointed service provider and evaluate levels of service provided.
4	Record Public Safety Incidents	Up to date public safety incident records	Ad-hoc	→	→	→	→	→	Manager and Service Provider	Board and Annual Report where applicable	Indicative records to be included in Annual Report
5	CID participation in joint operations	Participated in joint operations	Ad-hoc	1	1	1	1	1	Manager and Service Provider	Annual Report where applicable	Participation in joint operations dependent on the public safety needs of the area
6	Deploy Public Safety resources accordingly and effectively on visible patrols. Public Safety personnel and patrol vehicles to be easily identifiable	Effective Public Safety patrols	Daily	→	→	→	→	→	Manager and Service Provider	Operational	Utilise the "eyes and ears" of all Public Safety and gardening/street cleaning staff, as well as own staff, to identify any breaches
7	Participate in local safety forums	Attend local safety forums	Quarterly	4	4	4	4	4	Manager and Service Provider	Operational	Participate in existing Neighbourhood Watch, Community Police Forum, other CIDs and SAPS meetings
8	Application to be submitted to secure Law Enforcement Officer	Application submitted to the CCT	Annually	1	1	1	1	1	Manager	Operational	Contact Law Enforcement Department by February of every year. Contract concluded by April of every year

NO.	ACTION STEPS	KEY PERFORMANCE INDICATOR	FREQUENCY per year	DURATION IN WEEKS, MONTHS OR YEARS					RESPONSIBLE		COMMENTS
				Y1	Y2	Y3	Y4	Y5			
9	Deploy Law Enforcement Officer/s in support of the Public Safety strategy and management plan	Law Enforcement Officers deployed in CID	Ongoing	→	→	→	→	→	Manager and City of Cape Town	Operational	
10	Plan deployment of CCTV cameras	CCTV Camera deployment included in Public Safety strategy and management plan	Ongoing	→	→	→	→	→	Board, Manager and Service Provider	Board and Operational	
11	Register CCTV Cameras with the CCT	Cameras registered with the CCT	Ongoing	→	→	→	→	→	Manager	Operational	
12	Monitor CCTV Cameras	Monitoring of CCTV Cameras by appropriately qualified service providers.	Daily	→	→	→	→	→	Manager	Operational	Service providers to be reappointed or new providers to be appointed in last year of contract period by means of a competitive process. Well Documented.

MAINTENANCE AND CLEANSING											
NO.	ACTION STEPS	KEY PERFORMANCE INDICATOR	FREQUENCY per year	DURATION IN WEEKS, MONTHS OR YEARS					RESPONSIBLE	REPORTING	COMMENTS
				Y1	Y2	Y3	Y4	Y5			
1	Develop a maintenance and cleansing strategy and management plan	Up to date maintenance and cleansing strategy and management Plan	Year 1	→					Board, Manager and Service Provider	Annual Report	This is done comprehensively at the beginning of term and then modified continuously in conjunction with the service provider using their experience as well as available statistics
2	Appoint a maintenance and cleansing service provider(s)	Contracted service provider(s)	Year 1	→					Board	Board	Appoint a maintenance and cleansing service provider(s) through a fair, equitable, transparent and competitive process
3	Review and approve the maintenance and cleansing management plan	Approved maintenance and cleansing strategy and management plan	Annual	1	1	1	1	1	Board and Manager	Annual Report	Clear deliverables and defined performance indicators to guide maintenance and cleansing services by the appointed service provider and evaluate levels of service provided.
4	Evaluate and review the provision of public litter bins	Sufficient public litter bins	Daily	→	→	→	→	→	Manager	Operational	Identify hotspot areas of littering to provide public litter bins and log a CCT service request
5	Cleaning of streets and sidewalks supplementary to those provided by the CCT	Clean streets and sidewalks in partnership with the CCT	Ad-hoc	→	→	→	→	→	Manager	Operational	Identify hotspot areas of littering to provide additional street cleaning and log a CCT service request
6	Health and safety issues reported to the CCT	Logged CCT service request resolved	Ongoing	→	→	→	→	→	Manager	Operational	Follow up with sub-council in respect of outstanding CCT service requests
7	Combat Illegal dumping	Logged CCT service request resolved	Ongoing	→	→	→	→	→	Manager	Operational	Follow up with relevant department in respect of outstanding CCT service

NO.	ACTION STEPS	KEY PERFORMANCE INDICATOR	FREQUENCY Y per year	DURATION IN WEEKS, MONTHS OR YEARS					RESPONSIBLE		COMMENTS
				Y1	Y2	Y3	Y4	Y5			
8	Removal of illegal posters	Urban infrastructure free from illegal posters	Ongoing	→	→	→	→	→	Manager	Operational	Monitor the removal of illegal posters by the CCT and where relevant log a CCT service request
9	Removal of graffiti	Urban infrastructure free of graffiti	Ongoing	→	→	→	→	→	Manager	Operational	Monitor the removal of graffiti by the CCT and where relevant log a CCT service request
10	Record maintenance and cleansing activities	Up to date maintenance and cleansing records	Ongoing	→	→	→	→	→	Manager and Service Provider	Board and Annual Report where applicable	Indicative records to be included in Annual Report
11	Identify problems, requiring minor maintenance to CCT infrastructure and perform relevant maintenance on: a. Water and Sanitation infrastructure b. Roads and Stormwater infrastructure c. Road markings d. Grass cutting in Public Open Spaces incl. Parks e. Street furniture	Completed minor maintenance to CCT infrastructure	Ongoing	→	→	→	→	→	Manager and Service Provider	Operational, Board and Annual Report	Engage with relevant department before undertaking maintenance
12	Identify problems, required maintenance or damage to CCT infrastructure and report to relevant department including: a. Street lighting b. Water and Sanitation c. Roads and Stormwater d. Traffic signals and road markings e. Public Open Spaces incl. Parks	Report findings to the relevant CCT department and log CCT service request	Ongoing	→	→	→	→	→	Manager	Operational, Board and Annual Report	Follow up with sub-council in respect of outstanding CCT service requests

ENVIRONMENTAL DEVELOPMENT											
NO.	ACTION STEPS	KEY PERFORMANCE INDICATOR	FREQUENCY Y per year	DURATION IN WEEKS, MONTHS OR YEARS					RESPONSIBLE	REPORTING	COMMENTS
				Y1	Y2	Y3	Y4	Y5			
1	Develop an environmental development strategy and management plan	Up to date environmental development strategy and management Plan	Year 1	→					Board, Manager and Service Provider	Annual Report	This is done comprehensively at the beginning of term and then modified continuously in conjunction with the service provider using their experience as well as available statistics
2	Appoint an environmental development service provider(s)	Contracted service provider(s)	Year 1	→					Board	Board	Appoint an environmental development service provider(s) through a fair, equitable, transparent and competitive process. This could be an existing service provider.



NO.	ACTION STEPS	KEY PERFORMANCE INDICATOR	FREQUENCY Y per year	DURATION IN WEEKS, MONTHS OR YEARS					RESPONSIBLE		COMMENTS
				Y1	Y2	Y3	Y4	Y5			
3	Review and approve the environmental development management plan	Approved environmental development strategy and management plan	Annual	1	1	1	1	1	Board and Manager	Annual Report	Clear deliverables and defined performance indicators to guide environmental development services by the appointed or existing service provider and evaluate levels of service provided.
4	Promote waste minimization and management thereof through awareness on waste, water, noise and air pollution	Quarterly awareness campaign through newsletters or website to business and property owners.	Quarterly	4	4	4	4	4	Manager and Service Provider	Board	Partner with CCT Urban Waste Management as well as Law Enforcement
5	Implement a Recycling programme	Recyclable waste collected	Ongoing	→	→	→	→	→	Manager and Service Provider	Board and Annual Report	By service provider or cleaning staff.
6	Implement and maintain landscaping projects	Landscaping projects implemented and maintained	Ad-hoc	→	→	→	→	→	Manager and Service Provider	Board and Operational	
7	Install and maintain street furniture	Street furniture maintained	Ongoing	→	→	→	→	→	Manager and Service Provider	Board and Operational	
8	Monitor and report illegal signage and posters	Report findings to the relevant CCT department and log CCT service request	Ongoing	→	→	→	→	→	Manager and Service Provider	Board, Operational and Annual Report where applicable	
9	Improve green urban environment	Green urban environment	Ongoing	→	→	→	→	→	Manager and Service Provider	Board and Operational	Tree planting, maintaining of tree wells, road verges, replanting and maintaining of flower pots etc.
10	Monitor environmental health of waterways	Report findings to the relevant CCT department and log CCT service request	Ongoing	→	→	→	→	→	Manager and Service Provider	Board, Operational and Annual Report where applicable	

SOCIAL AND ECONOMIC DEVELOPMENT											
NO.	ACTION STEPS	KEY PERFORMANCE INDICATOR	FREQUENCY Y per year	DURATION IN WEEKS, MONTHS OR YEARS					RESPONSIBLE	REPORTING	COMMENTS
				Y1	Y2	Y3	Y4	Y5			
1	Develop a social and economic development strategy and management plan	Up to date social and economic development strategy and management Plan	Year 1	→					Board, Manager and Service Provider	Annual Report	This is done comprehensively at the beginning of term and then modified continuously in conjunction with the service provider using their experience as well as available statistics
2	Appoint a social development service provider(s)	Contracted service provider(s)	Year 1	→					Board	Board	Appoint a social development service provider(s) through a fair, equitable, transparent and competitive process. This could be an existing service provider.

NO.	ACTION STEPS	KEY PERFORMANCE INDICATOR	FREQUENCY Y per year	DURATION IN WEEKS, MONTHS OR YEARS					RESPONSIBLE	REPORTING	COMMENTS
				Y1	Y2	Y3	Y4	Y5			
3	Review and approve the social and economic development management plan	Approved social and economic development strategy and management plan	Annual	1	1	1	1	1	Board and Manager	Annual Report	Clear deliverables and defined performance indicators to guide social and economic development services by the appointed or existing service provider and evaluate levels of service provided.
4	Monitor and review implementation of informal trading plans in support of economic development	Managed informal trading	Ongoing	→	→	→	→	→	Manager and Service Provider	Board, Operational and Annual Report where applicable	
5	Promote Social Development awareness	Quarterly awareness campaign through newsletters or website	Quarterly	4	4	4	4	4	Manager and Service Provider	Board	Partner with CCT Social Development & Early Childhood Development Directorate and social welfare organisations
6	Work in conjunction with local social welfare and job creation organisations and develop the delivery of the supplementary services to improve the urban environment	Job creation through social intervention	Ongoing	→	→	→	→	→	Manager and social welfare organisations	Annual Report	Partner with CCT Social Development and social welfare organisations
7	Provide social services	Social service to recipients	Ongoing	→	→	→	→	→	Manager and Social Worker	Board and Annual Report	

COMMUNICATION											
NO.	ACTION STEPS	KEY PERFORMANCE INDICATOR	FREQUENCY Y per year	DURATION IN WEEKS, MONTHS OR YEARS					RESPONSIBLE	REPORTING	COMMENTS
				Y1	Y2	Y3	Y4	Y5			
1	Develop a communication strategy and management plan	Up to date communication strategy and management Plan	Year 1	→					Board, Manager and Service Provider	Annual Report	This is done comprehensively at the beginning of term and then modified continuously in conjunction with the service provider using their experience as well as available statistics
2	Appoint a communication service provider(s)	Contracted service provider(s)	Year 1	→					Board	Board	Appoint a communication service provider(s) through a fair, equitable, transparent and competitive process. This could be an existing service provider.
3	Review and approve the communication management plan	Approved communication strategy and management plan	Annual	1	1	1	1	1	Board and Manager	Annual Report	Clear deliverables and defined performance indicators to guide communication services by the appointed or existing service provider and evaluate levels of service provided.
4	Maintain Website	Up to date website	Ad-hoc	→	→	→	→	→	Manager	Board	In terms of CCT CID Policy requirements

NO.	ACTION STEPS	KEY PERFORMANCE INDICATOR	FREQUENCY Y per year	DURATION IN WEEKS, MONTHS OR YEARS					RESPONSIBLE		COMMENTS
				Y1	Y2	Y3	Y4	Y5			
5	Newsletters / Newsflashes	Communication distributed	Quarterly	4	4	4	4	4	Manager	Operational	Including use of social media platforms
6	Regular interaction with property and business owners	Feedback on interactions	Ongoing	→	→	→	→	→	Manager	Operational	
7	CID information signage	Clearly identifiable CID signage	Ad-hoc	→	→	→	→	→	Manager	Operational	Signage to be visible and maintained with CCT approval



LITTLE MOWBRAY AND ROSEBANK IMPROVEMENT DISTRICT NPC

# LITTLE MOWBRAY AND ROSEBANK IMPROVEMENT DISTRICT (LMRID) 5-YEAR TERM BUDGET

1 July 2026 to 30 June 2031

	2026/27	2027/28	2028/29	2029/30	2030/31
INCOME	R	R	R	R	R
Income from additional rates	-3 335 649 94.2%	-3 552 470 92.8%	-3 783 380 92.8%	-4 029 300 94.4%	-4 291 203 97.7%
Other: Accumulated surplus	-205 000 5.8%	-276 750 7.2%	-292 700 7.2%	-240 500 5.6%	-101 980 2.3%
<b>TOTAL INCOME</b>	<b>-3 540 649 100.0%</b>	<b>-3 829 220 100.0%</b>	<b>-4 076 080 100.0%</b>	<b>-4 269 800 100.0%</b>	<b>-4 393 183 100.0%</b>
EXPENDITURE	R	R	R	R	R
<b>Core business</b>	<b>2 917 300 82.4%</b>	<b>3 120 375 81.5%</b>	<b>3 333 746 81.8%</b>	<b>3 566 835 83.5%</b>	<b>3 810 512 86.7%</b>
Cleansing services	290 000	307 400	325 845	350 395	371 420
Environmental upgrading	63 000	66 780	70 785	75 030	79 530
Public safety	2 423 550	2 593 200	2 774 721	2 968 950	3 176 780
Public Safety - CCTV monitoring	20 000	25 000	28 000	30 000	33 200
Social upliftment	120 750	127 995	134 395	142 460	149 582
<b>Depreciation</b>	<b>30 000 0.8%</b>	<b>52 300 1.4%</b>	<b>79 700 2.0%</b>	<b>89 300 2.1%</b>	<b>89 300 2.0%</b>
<b>Repairs &amp; Maintenance</b>	<b>40 730 1.2%</b>	<b>43 000 1.1%</b>	<b>46 000 1.1%</b>	<b>50 000 1.2%</b>	<b>50 000 1.1%</b>
<b>General expenditure</b>	<b>169 550 4.8%</b>	<b>180 221 4.7%</b>	<b>190 433 4.7%</b>	<b>202 286 4.7%</b>	<b>212 655 4.8%</b>
Accounting and taxation fees	61 800	66 000	69 960	74 160	78 600
Administration and management fees	32 900	34 875	36 970	39 190	41 540
Advertising costs	8 700	9 225	9 780	10 500	11 130
Auditors' remuneration	21 000	22 470	24 045	25 750	27 555
Bank charges	2 500	2 650	2 800	3 000	3 200
Catering and food	1 800	1 910	2 025	2 150	2 300
Contingency / Sundry	5 000	5 158	4 983	5 036	3 280
Insurance	15 000	15 900	16 855	17 900	18 975
Marketing and promotions	4 000	4 240	4 450	5 000	5 500
Meeting expenses	1 500	1 750	1 750	1 750	1 750
Printing / stationery / photographic	1 500	1 500	1 500	1 600	1 600
Secretarial duties	8 000	8 400	8 865	9 410	9 975
Telecommunication	5 850	6 143	6 450	6 840	7 250
<b>Projects</b>	<b>163 000 4.6%</b>	<b>138 750 3.6%</b>	<b>112 700 2.8%</b>	<b>97 500 2.3%</b>	<b>101 980 2.3%</b>
Additional Environmental	85 000	88 750	92 700	97 500	101 980
Ad Hoc Cleansing	35 000	25 000			
Ad Hoc Environmental	35 000	25 000	20 000		
Ad Hoc Social upliftment	8 000				

	2026/27		2027/28		2028/29		2029/30		2030/31	
<b>Capital expenditure (PPE)</b>	<b>120 000</b>	<b>3.4%</b>	<b>188 000</b>	<b>4.9%</b>	<b>200 000</b>	<b>4.9%</b>	<b>143 000</b>	<b>3.3%</b>	<b>-</b>	<b>0.0%</b>
CCTV / LPR cameras	45 000		70 000		74 000		53 000			
Camera Site Infrastructure	75 000		118 000		126 000		90 000			
<b>Rolling bad debt reserve 3%</b>	<b>100 069</b>	<b>2.8%</b>	<b>106 574</b>	<b>2.8%</b>	<b>113 501</b>	<b>2.8%</b>	<b>120 879</b>	<b>2.8%</b>	<b>128 736</b>	<b>2.9%</b>
<b>TOTAL EXPENDITURE</b>	<b>3 540 649</b>	<b>100.0%</b>	<b>3 829 220</b>	<b>100.0%</b>	<b>4 076 080</b>	<b>100.0%</b>	<b>4 269 800</b>	<b>100.0%</b>	<b>4 393 183</b>	<b>100.0%</b>

**(SURPLUS) / SHORTFALL**

-

-

-

-

-

**GROWTH: EXPENDITURE**

**10.9%**

**8.2%**

**6.4%**

**4.8%**

**2.9%**

**GROWTH: ADD RATES REQUIRED**

**6.5%**

**6.5%**

**6.5%**

**6.5%**

**6.5%**

Income from additional rates for 2025/26

-3 132 067

Total Expenditure Budget for 2025/26

3 192 067



LIST OF RATEABLE PROPERTIES WITHIN THE LITTLE MOWBRAY AND ROSEBANK CID						
Category	St No.	Street	Suburb	Unit No	LIS Key	ERF No
RESIDENTIAL	1	ALEXANDER ROAD	MOWBRAY		20779	29017
RESIDENTIAL	2	ALEXANDER ROAD	MOWBRAY		20791	29032
RESIDENTIAL	3	ALEXANDER ROAD	MOWBRAY		20778	29016
RESIDENTIAL	4	ALEXANDER ROAD	MOWBRAY		20785	29026
RESIDENTIAL	5	ALEXANDER ROAD	MOWBRAY	1	20777	29015
RESIDENTIAL	5	ALEXANDER ROAD	MOWBRAY	2	20777	29015
RESIDENTIAL	5	ALEXANDER ROAD	MOWBRAY	3	20777	29015
RESIDENTIAL	5	ALEXANDER ROAD	MOWBRAY	4	20777	29015
RESIDENTIAL	5	ALEXANDER ROAD	MOWBRAY	5	20777	29015
RESIDENTIAL	5	ALEXANDER ROAD	MOWBRAY	6	20777	29015
RESIDENTIAL	5	ALEXANDER ROAD	MOWBRAY	7	20777	29015
RESIDENTIAL	5	ALEXANDER ROAD	MOWBRAY	8	20777	29015
RESIDENTIAL	5	ALEXANDER ROAD	MOWBRAY	9	20777	29015
RESIDENTIAL	5	ALEXANDER ROAD	MOWBRAY	10	20777	29015
RESIDENTIAL	5	ALEXANDER ROAD	MOWBRAY	11	20777	29015
RESIDENTIAL	5	ALEXANDER ROAD	MOWBRAY	12	20777	29015
RESIDENTIAL	5	ALEXANDER ROAD	MOWBRAY	13	20777	29015
RESIDENTIAL	5	ALEXANDER ROAD	MOWBRAY	14	20777	29015
RESIDENTIAL	5	ALEXANDER ROAD	MOWBRAY	15	20777	29015
RESIDENTIAL	5	ALEXANDER ROAD	MOWBRAY	16	20777	29015
RESIDENTIAL	5	ALEXANDER ROAD	MOWBRAY	17	20777	29015
RESIDENTIAL	5	ALEXANDER ROAD	MOWBRAY	18	20777	29015
RESIDENTIAL	5	ALEXANDER ROAD	MOWBRAY	19	20777	29015
RESIDENTIAL	5	ALEXANDER ROAD	MOWBRAY	20	20777	29015
RESIDENTIAL	5	ALEXANDER ROAD	MOWBRAY	21	20777	29015
RESIDENTIAL	46A	ALMA MEWS	ROSEBANK		444130	166511
RESIDENTIAL	46B	ALMA MEWS	ROSEBANK		444131	166512
RESIDENTIAL	46C	ALMA MEWS	ROSEBANK		444132	166513
RESIDENTIAL	46D	ALMA MEWS	ROSEBANK		444133	166514
RESIDENTIAL	27	ALMA ROAD	ROSEBANK		22447	31751
RESIDENTIAL	29	ALMA ROAD	ROSEBANK		22448	31752
RESIDENTIAL	31	ALMA ROAD	ROSEBANK		22459	31764
RESIDENTIAL	33	ALMA ROAD	ROSEBANK		22458	31763
RESIDENTIAL	35	ALMA ROAD	ROSEBANK		22457	31762

Category	St No.	Street	Suburb	Unit No	LIS Key	ERF No
RESIDENTIAL	37	ALMA ROAD	ROSEBANK		22456	31761
RESIDENTIAL	39	ALMA ROAD	ROSEBANK		22455	31760
RESIDENTIAL	40	ALMA ROAD	ROSEBANK		22498	31804
RESIDENTIAL	41	ALMA ROAD	ROSEBANK		22454	31759
RESIDENTIAL	43	ALMA ROAD	ROSEBANK		22493	31798
NON-RESIDENTIAL	44	ALMA ROAD	ROSEBANK		22499	31805
RESIDENTIAL	45	ALMA ROAD	ROSEBANK		22492	31797
RESIDENTIAL	47	ALMA ROAD	ROSEBANK		22491	31796
RESIDENTIAL	49	ALMA ROAD	ROSEBANK		22490	31795
RESIDENTIAL	50	ALMA ROAD	ROSEBANK		22684	32079
RESIDENTIAL	52	ALMA ROAD	ROSEBANK		22685	32080
RESIDENTIAL	53	ALMA ROAD	ROSEBANK		22489	31794
RESIDENTIAL	54	ALMA ROAD	ROSEBANK		439103	164011
RESIDENTIAL	55	ALMA ROAD	ROSEBANK	1	22488	31793
RESIDENTIAL	55	ALMA ROAD	ROSEBANK	2	22488	31793
RESIDENTIAL	55	ALMA ROAD	ROSEBANK	3	22488	31793
RESIDENTIAL	55	ALMA ROAD	ROSEBANK	4	22488	31793
RESIDENTIAL	55	ALMA ROAD	ROSEBANK	5	22488	31793
RESIDENTIAL	55	ALMA ROAD	ROSEBANK	6	22488	31793
RESIDENTIAL	55	ALMA ROAD	ROSEBANK	7	22488	31793
RESIDENTIAL	55	ALMA ROAD	ROSEBANK	8	22488	31793
RESIDENTIAL	55	ALMA ROAD	ROSEBANK	9	22488	31793
RESIDENTIAL	55	ALMA ROAD	ROSEBANK	10	22488	31793
RESIDENTIAL	55	ALMA ROAD	ROSEBANK	11	22488	31793
RESIDENTIAL	55	ALMA ROAD	ROSEBANK	12	22488	31793
RESIDENTIAL	55	ALMA ROAD	ROSEBANK	13	22488	31793
RESIDENTIAL	55	ALMA ROAD	ROSEBANK	14	22488	31793
RESIDENTIAL	55	ALMA ROAD	ROSEBANK	15	22488	31793
RESIDENTIAL	55	ALMA ROAD	ROSEBANK	16	22488	31793
RESIDENTIAL	55	ALMA ROAD	ROSEBANK	17	22488	31793
RESIDENTIAL	55	ALMA ROAD	ROSEBANK	18	22488	31793
RESIDENTIAL	55	ALMA ROAD	ROSEBANK	19	22488	31793
RESIDENTIAL	55	ALMA ROAD	ROSEBANK	20	22488	31793
RESIDENTIAL	55	ALMA ROAD	ROSEBANK	21	22488	31793
RESIDENTIAL	55	ALMA ROAD	ROSEBANK	22	22488	31793
RESIDENTIAL	55	ALMA ROAD	ROSEBANK	23	22488	31793

Category	St No.	Street	Suburb	Unit No	LIS Key	ERF No
RESIDENTIAL	55	ALMA ROAD	ROSEBANK	24	22488	31793
RESIDENTIAL	55	ALMA ROAD	ROSEBANK	25	22488	31793
RESIDENTIAL	55	ALMA ROAD	ROSEBANK	26	22488	31793
RESIDENTIAL	55	ALMA ROAD	ROSEBANK	27	22488	31793
RESIDENTIAL	55	ALMA ROAD	ROSEBANK	28	22488	31793
RESIDENTIAL	55	ALMA ROAD	ROSEBANK	29	22488	31793
RESIDENTIAL	55	ALMA ROAD	ROSEBANK	30	22488	31793
RESIDENTIAL	55	ALMA ROAD	ROSEBANK	31	22488	31793
RESIDENTIAL	55	ALMA ROAD	ROSEBANK	32	22488	31793
RESIDENTIAL	55	ALMA ROAD	ROSEBANK	33	22488	31793
RESIDENTIAL	56	ALMA ROAD	ROSEBANK		22500	31808
RESIDENTIAL	58	ALMA ROAD	ROSEBANK		22501	31809
RESIDENTIAL	60	ALMA ROAD	ROSEBANK		22502	31810
RESIDENTIAL	61	ALMA ROAD	ROSEBANK		22486	31791
RESIDENTIAL	63	ALMA ROAD	ROSEBANK		22485	31790
RESIDENTIAL	64	ALMA ROAD	ROSEBANK		22503	31811
RESIDENTIAL	68	ALMA ROAD	ROSEBANK	1	22504	31812
RESIDENTIAL	68	ALMA ROAD	ROSEBANK	2	22504	31812
RESIDENTIAL	69	ALMA ROAD	ROSEBANK		22686	32081
RESIDENTIAL	71	ALMA ROAD	ROSEBANK		22688	32083
RESIDENTIAL	72	ALMA ROAD	ROSEBANK		22507	31815
RESIDENTIAL	74	ALMA ROAD	ROSEBANK		22508	31816
RESIDENTIAL	76	ALMA ROAD	ROSEBANK		22509	31817
RESIDENTIAL	78	ALMA ROAD	ROSEBANK		22510	31818
RESIDENTIAL	68A	ALMA ROAD	ROSEBANK		22505	31813
RESIDENTIAL	70A	ALMA ROAD	ROSEBANK		22506	31814
RESIDENTIAL	1	ANNERLEY ROAD	ROSEBANK		22538	31855
RESIDENTIAL	2	ANNERLEY ROAD	ROSEBANK		22527	31837
RESIDENTIAL	3	ANNERLEY ROAD	ROSEBANK		22537	31854
RESIDENTIAL	4	ANNERLEY ROAD	ROSEBANK		22528	31838
RESIDENTIAL	5	ANNERLEY ROAD	ROSEBANK		22536	31853
RESIDENTIAL	6	ANNERLEY ROAD	ROSEBANK		22529	31839
NON-RESIDENTIAL	7	ANNERLEY ROAD	ROSEBANK		1063004	31951
RESIDENTIAL	9	ANNERLEY ROAD	ROSEBANK		22593	31920
RESIDENTIAL	11	ANNERLEY ROAD	ROSEBANK		22592	31919
RESIDENTIAL	12	ANNERLEY ROAD	ROSEBANK		22594	31921

Category	St No.	Street	Suburb	Unit No	LIS Key	ERF No
RESIDENTIAL	13	ANNERLEY ROAD	ROSEBANK		22591	31918
RESIDENTIAL	14	ANNERLEY ROAD	ROSEBANK		22595	31922
RESIDENTIAL	15	ANNERLEY ROAD	ROSEBANK		22590	31917
RESIDENTIAL	19	ANNERLEY ROAD	ROSEBANK		300100	155018
RESIDENTIAL	4A	ANNERLEY ROAD	ROSEBANK		298727	158526
RESIDENTIAL	1	BANKSIA ROAD	ROSEBANK		22417	31696
RESIDENTIAL	2	BANKSIA ROAD	ROSEBANK		22420	31708
RESIDENTIAL	3	BANKSIA ROAD	ROSEBANK		22416	31695
RESIDENTIAL	4	BANKSIA ROAD	ROSEBANK		22421	31709
RESIDENTIAL	5	BANKSIA ROAD	ROSEBANK		22601	31930
RESIDENTIAL	6	BANKSIA ROAD	ROSEBANK		22422	31710
RESIDENTIAL	7	BANKSIA ROAD	ROSEBANK		22415	31694
RESIDENTIAL	8	BANKSIA ROAD	ROSEBANK		22423	31711
RESIDENTIAL	9	BANKSIA ROAD	ROSEBANK		22414	31693
RESIDENTIAL	10	BANKSIA ROAD	ROSEBANK		22425	31713
RESIDENTIAL	11	BANKSIA ROAD	ROSEBANK		22412	31691
RESIDENTIAL	12	BANKSIA ROAD	ROSEBANK		22426	31714
RESIDENTIAL	13	BANKSIA ROAD	ROSEBANK		22411	31690
NON-RESIDENTIAL	14	BANKSIA ROAD	ROSEBANK		22427	31715
RESIDENTIAL	15	BANKSIA ROAD	ROSEBANK		22410	31689
RESIDENTIAL	16	BANKSIA ROAD	ROSEBANK		22428	31716
RESIDENTIAL	17	BANKSIA ROAD	ROSEBANK		22409	31688
RESIDENTIAL	18	BANKSIA ROAD	ROSEBANK		439179	166089
RESIDENTIAL	19	BANKSIA ROAD	ROSEBANK		22408	31687
RESIDENTIAL	21	BANKSIA ROAD	ROSEBANK		22407	31686
RESIDENTIAL	23	BANKSIA ROAD	ROSEBANK		22406	31685
RESIDENTIAL	18A	BANKSIA ROAD	ROSEBANK		439060	166088
RESIDENTIAL	19A	BANKSIA ROAD	ROSEBANK		22600	31929
RESIDENTIAL	8A	BANKSIA ROAD	ROSEBANK		22424	31712
RESIDENTIAL	6	BERKELEY ROAD	MOWBRAY		20909	29227
RESIDENTIAL	1	BERKLEY ROAD	MOWBRAY		20935	29254
RESIDENTIAL	3	BERKLEY ROAD	MOWBRAY		20934	29253
RESIDENTIAL	5	BERKLEY ROAD	MOWBRAY		20933	29252
NON-RESIDENTIAL	7	BERKLEY ROAD	MOWBRAY		1014568	172315
RESIDENTIAL	8	BERKLEY ROAD	MOWBRAY		977726	170138
RESIDENTIAL	10	BERKLEY ROAD	MOWBRAY		20912	29230

Category	St No.	Street	Suburb	Unit No	LIS Key	ERF No
RESIDENTIAL	12	BERKLEY ROAD	MOWBRAY		20913	29231
RESIDENTIAL	1	BLOEMENDAL ROAD	MOWBRAY	1	20769	29003
RESIDENTIAL	1	BLOEMENDAL ROAD	MOWBRAY	2	20769	29003
RESIDENTIAL	1	BLOEMENDAL ROAD	MOWBRAY	3	20769	29003
RESIDENTIAL	1	BLOEMENDAL ROAD	MOWBRAY	4	20769	29003
RESIDENTIAL	1	BLOEMENDAL ROAD	MOWBRAY	5	20769	29003
RESIDENTIAL	1	BLOEMENDAL ROAD	MOWBRAY	6	20769	29003
RESIDENTIAL	1	BLOEMENDAL ROAD	MOWBRAY	7	20769	29003
RESIDENTIAL	1	BLOEMENDAL ROAD	MOWBRAY	8	20769	29003
RESIDENTIAL	1	BLOEMENDAL ROAD	MOWBRAY	9	20769	29003
RESIDENTIAL	1	BLOEMENDAL ROAD	MOWBRAY	10	20769	29003
RESIDENTIAL	2	BLOEMENDAL ROAD	MOWBRAY		20784	29025
RESIDENTIAL	8	BLOEMENDAL ROAD	MOWBRAY		20776	29012
RESIDENTIAL	9	BLOEMENDAL ROAD	MOWBRAY		20768	29002
RESIDENTIAL	10	BLOEMENDAL ROAD	MOWBRAY		20770	29005
RESIDENTIAL	11	BLOEMENDAL ROAD	MOWBRAY		20767	29001
RESIDENTIAL	12	BLOEMENDAL ROAD	MOWBRAY	1	20743	28970
RESIDENTIAL	12	BLOEMENDAL ROAD	MOWBRAY	2	20743	28970
RESIDENTIAL	12	BLOEMENDAL ROAD	MOWBRAY	3	20743	28970
RESIDENTIAL	12	BLOEMENDAL ROAD	MOWBRAY	4	20743	28970
RESIDENTIAL	12	BLOEMENDAL ROAD	MOWBRAY	5	20743	28970
RESIDENTIAL	12	BLOEMENDAL ROAD	MOWBRAY	6	20743	28970
RESIDENTIAL	12	BLOEMENDAL ROAD	MOWBRAY	7	20743	28970
RESIDENTIAL	12	BLOEMENDAL ROAD	MOWBRAY	8	20743	28970
RESIDENTIAL	12	BLOEMENDAL ROAD	MOWBRAY	9	20743	28970
RESIDENTIAL	12	BLOEMENDAL ROAD	MOWBRAY	10	20743	28970
RESIDENTIAL	12	BLOEMENDAL ROAD	MOWBRAY	11	20743	28970
RESIDENTIAL	12	BLOEMENDAL ROAD	MOWBRAY	12	20743	28970
RESIDENTIAL	12	BLOEMENDAL ROAD	MOWBRAY	13	20743	28970
RESIDENTIAL	12	BLOEMENDAL ROAD	MOWBRAY	14	20743	28970
RESIDENTIAL	12	BLOEMENDAL ROAD	MOWBRAY	15	20743	28970
RESIDENTIAL	12	BLOEMENDAL ROAD	MOWBRAY	16	20743	28970
RESIDENTIAL	12	BLOEMENDAL ROAD	MOWBRAY	17	20743	28970
RESIDENTIAL	12	BLOEMENDAL ROAD	MOWBRAY	18	20743	28970
RESIDENTIAL	13	BLOEMENDAL ROAD	MOWBRAY		20740	28967
NON-RESIDENTIAL	2B	BLOEMENDAL ROAD	MOWBRAY		20783	29021



Category	St No.	Street	Suburb	Unit No	LIS Key	ERF No
RESIDENTIAL	8A	BLOEMENDAL ROAD	MOWBRAY		24068915	30568
RESIDENTIAL	1	BUSHWOOD ROAD	MOWBRAY		20915	29233
RESIDENTIAL	2	BUSHWOOD ROAD	MOWBRAY		20958	29282
RESIDENTIAL	3	BUSHWOOD ROAD	MOWBRAY		20914	29232
RESIDENTIAL	4	BUSHWOOD ROAD	MOWBRAY		20959	29283
RESIDENTIAL	5	BUSHWOOD ROAD	MOWBRAY		20930	29249
RESIDENTIAL	6	BUSHWOOD ROAD	MOWBRAY		20960	29284
RESIDENTIAL	7	BUSHWOOD ROAD	MOWBRAY		20929	29248
RESIDENTIAL	8	BUSHWOOD ROAD	MOWBRAY		20961	29285
RESIDENTIAL	9	BUSHWOOD ROAD	MOWBRAY		20928	29247
RESIDENTIAL	10	BUSHWOOD ROAD	MOWBRAY		20962	29286
RESIDENTIAL	11	BUSHWOOD ROAD	MOWBRAY		20927	29246
RESIDENTIAL	12	BUSHWOOD ROAD	MOWBRAY		21916	30501
RESIDENTIAL	13	BUSHWOOD ROAD	MOWBRAY		88373746	179601
RESIDENTIAL	14	BUSHWOOD ROAD	MOWBRAY	1	83468782	30543
RESIDENTIAL	14	BUSHWOOD ROAD	MOWBRAY	2	83468782	30543
RESIDENTIAL	15	BUSHWOOD ROAD	MOWBRAY		20940	29259
RESIDENTIAL	19	BUSHWOOD ROAD	MOWBRAY		20969	29298
RESIDENTIAL	21	BUSHWOOD ROAD	MOWBRAY		20982	29311
RESIDENTIAL	23	BUSHWOOD ROAD	MOWBRAY		20981	29310
RESIDENTIAL	12A	BUSHWOOD ROAD	MOWBRAY		21920	30505
RESIDENTIAL	12B	BUSHWOOD ROAD	MOWBRAY		21919	30504
RESIDENTIAL	12C	BUSHWOOD ROAD	MOWBRAY		21918	30503
RESIDENTIAL	20A	BUSHWOOD ROAD	MOWBRAY		20916	29234
NON-RESIDENTIAL	1	CALEDONIAN ROAD	MOWBRAY		20749	28977
RESIDENTIAL	6	CALEDONIAN ROAD	MOWBRAY		20763	28995
RESIDENTIAL	8	CALEDONIAN ROAD	MOWBRAY		20754	28986
RESIDENTIAL	10	CALEDONIAN ROAD	MOWBRAY		20738	28965
RESIDENTIAL	12	CALEDONIAN ROAD	MOWBRAY		20731	28958
NON-RESIDENTIAL	1A	CALEDONIAN ROAD	MOWBRAY		20751	28982
RESIDENTIAL	3	CAMP GROUND ROAD	MOWBRAY		22560	31881
RESIDENTIAL	6	CAMP GROUND ROAD	MOWBRAY		22307	31537
RESIDENTIAL	7	CAMP GROUND ROAD	MOWBRAY		22547	31865
RESIDENTIAL	8	CAMP GROUND ROAD	MOWBRAY		22308	31538
RESIDENTIAL	9	CAMP GROUND ROAD	MOWBRAY		22661	32044
RESIDENTIAL	10	CAMP GROUND ROAD	MOWBRAY		22309	31539

Category	St No.	Street	Suburb	Unit No	LIS Key	ERF No
RESIDENTIAL	12	CAMP GROUND ROAD	MOWBRAY		22338	31588
RESIDENTIAL	14	CAMP GROUND ROAD	MOWBRAY		22339	31589
RESIDENTIAL	15	CAMP GROUND ROAD	MOWBRAY		22541	31859
RESIDENTIAL	17	CAMP GROUND ROAD	MOWBRAY		22546	31864
NON-RESIDENTIAL	14B	CAMP GROUND ROAD	MOWBRAY		22322	31569
RESIDENTIAL	16	CAMP GROUND ROAD	ROSEBANK		22365	31615
RESIDENTIAL	18	CAMP GROUND ROAD	ROSEBANK		22366	31616
RESIDENTIAL	20	CAMP GROUND ROAD	ROSEBANK		22367	31617
RESIDENTIAL	21	CAMP GROUND ROAD	ROSEBANK		22534	31848
NON-RESIDENTIAL	22	CAMP GROUND ROAD	ROSEBANK		415323	32174
RESIDENTIAL	23	CAMP GROUND ROAD	ROSEBANK		22540	31857
RESIDENTIAL	25	CAMP GROUND ROAD	ROSEBANK		22539	31856
RESIDENTIAL	29	CAMP GROUND ROAD	ROSEBANK		22532	31844
RESIDENTIAL	30	CAMP GROUND ROAD	ROSEBANK		22516	31824
RESIDENTIAL	32	CAMP GROUND ROAD	ROSEBANK		22517	31825
RESIDENTIAL	34	CAMP GROUND ROAD	ROSEBANK		22482	31786
RESIDENTIAL	36	CAMP GROUND ROAD	ROSEBANK		22494	31799
RESIDENTIAL	40	CAMP GROUND ROAD	ROSEBANK		22511	31819
RESIDENTIAL	1	CHEL TENHAM ROAD	MOWBRAY		20878	29190
RESIDENTIAL	2	CHEL TENHAM ROAD	MOWBRAY		20798	29089
RESIDENTIAL	3	CHEL TENHAM ROAD	MOWBRAY		20877	29189
RESIDENTIAL	4	CHEL TENHAM ROAD	MOWBRAY		20799	29090
RESIDENTIAL	5	CHEL TENHAM ROAD	MOWBRAY		20890	29204
RESIDENTIAL	6	CHEL TENHAM ROAD	MOWBRAY		20800	29091
RESIDENTIAL	7	CHEL TENHAM ROAD	MOWBRAY		20896	29211
RESIDENTIAL	8	CHEL TENHAM ROAD	MOWBRAY		20801	29092
RESIDENTIAL	9	CHEL TENHAM ROAD	MOWBRAY		20907	29224
RESIDENTIAL	10	CHEL TENHAM ROAD	MOWBRAY		20815	29109
RESIDENTIAL	11	CHEL TENHAM ROAD	MOWBRAY		975421	169793
RESIDENTIAL	12	CHEL TENHAM ROAD	MOWBRAY		20816	29110
RESIDENTIAL	13	CHEL TENHAM ROAD	MOWBRAY		22563	31884
RESIDENTIAL	15	CHEL TENHAM ROAD	MOWBRAY		22575	31897
RESIDENTIAL	17	CHEL TENHAM ROAD	MOWBRAY		22574	31896
RESIDENTIAL	19	CHEL TENHAM ROAD	MOWBRAY		22573	31895
NON-RESIDENTIAL	11B	CHEL TENHAM ROAD	MOWBRAY		300139	44305
RESIDENTIAL	7A	CHEL TENHAM ROAD	MOWBRAY		20897	29212

Category	St No.	Street	Suburb	Unit No	LIS Key	ERF No
RESIDENTIAL	1	CLARENDON ROAD	MOWBRAY		22319	31549
RESIDENTIAL	2	CLARENDON ROAD	MOWBRAY		22330	31579
RESIDENTIAL	3	CLARENDON ROAD	MOWBRAY		22318	31548
RESIDENTIAL	4	CLARENDON ROAD	MOWBRAY		22331	31580
RESIDENTIAL	5	CLARENDON ROAD	MOWBRAY		22317	31547
RESIDENTIAL	6	CLARENDON ROAD	MOWBRAY		22332	31581
RESIDENTIAL	7	CLARENDON ROAD	MOWBRAY		22316	31546
RESIDENTIAL	8	CLARENDON ROAD	MOWBRAY		22659	32042
RESIDENTIAL	9	CLARENDON ROAD	MOWBRAY		22315	31545
RESIDENTIAL	10	CLARENDON ROAD	MOWBRAY		22333	31583
RESIDENTIAL	11	CLARENDON ROAD	MOWBRAY		22314	31544
RESIDENTIAL	12	CLARENDON ROAD	MOWBRAY		22334	31584
RESIDENTIAL	13	CLARENDON ROAD	MOWBRAY		22313	31543
RESIDENTIAL	14	CLARENDON ROAD	MOWBRAY		22335	31585
RESIDENTIAL	15	CLARENDON ROAD	MOWBRAY		22312	31542
RESIDENTIAL	16	CLARENDON ROAD	MOWBRAY		22336	31586
RESIDENTIAL	17	CLARENDON ROAD	MOWBRAY		22311	31541
RESIDENTIAL	18	CLARENDON ROAD	MOWBRAY		22337	31587
RESIDENTIAL	19	CLARENDON ROAD	MOWBRAY		22310	31540
RESIDENTIAL	2	CLIFTON ROAD	MOWBRAY		20879	29193
RESIDENTIAL	3	CLIFTON ROAD	MOWBRAY		20876	29188
RESIDENTIAL	4	CLIFTON ROAD	MOWBRAY		20880	29194
RESIDENTIAL	5	CLIFTON ROAD	MOWBRAY		20875	29187
RESIDENTIAL	6	CLIFTON ROAD	MOWBRAY		20881	29195
RESIDENTIAL	8	CLIFTON ROAD	MOWBRAY		20882	29196
RESIDENTIAL	11	CLIFTON ROAD	MOWBRAY		20987	29317
RESIDENTIAL	13	CLIFTON ROAD	MOWBRAY		20986	29316
RESIDENTIAL	14	CLIFTON ROAD	MOWBRAY		20964	29293
RESIDENTIAL	15	CLIFTON ROAD	MOWBRAY		20985	29315
RESIDENTIAL	16	CLIFTON ROAD	MOWBRAY		20965	29294
RESIDENTIAL	17	CLIFTON ROAD	MOWBRAY		20990	29320
RESIDENTIAL	18	CLIFTON ROAD	MOWBRAY		20966	29295
RESIDENTIAL	19	CLIFTON ROAD	MOWBRAY		20984	29313
RESIDENTIAL	20	CLIFTON ROAD	MOWBRAY		20967	29296
RESIDENTIAL	21	CLIFTON ROAD	MOWBRAY		20983	29312
RESIDENTIAL	22	CLIFTON ROAD	MOWBRAY		20968	29297

Category	St No.	Street	Suburb	Unit No	LIS Key	ERF No
RESIDENTIAL	3	CROSS STREET	ROSEBANK		22453	31758
RESIDENTIAL	1	DE VILLIERS AVENUE	MOWBRAY		22347	31597
RESIDENTIAL	5	DE VILLIERS AVENUE	MOWBRAY		22345	31595
RESIDENTIAL	7	DE VILLIERS AVENUE	MOWBRAY		22344	31594
RESIDENTIAL	9	DE VILLIERS AVENUE	MOWBRAY		22343	31593
RESIDENTIAL	11	DE VILLIERS AVENUE	MOWBRAY		22342	31592
RESIDENTIAL	13	DE VILLIERS AVENUE	MOWBRAY		22341	31591
RESIDENTIAL	17	DE VILLIERS AVENUE	MOWBRAY		22340	31590
RESIDENTIAL	1	DE VILLIERS AVENUE	ROSEBANK		22328	31577
RESIDENTIAL	2	DE VILLIERS AVENUE	ROSEBANK		22352	31602
RESIDENTIAL	3	DE VILLIERS AVENUE	ROSEBANK		22346	31596
RESIDENTIAL	4	DE VILLIERS AVENUE	ROSEBANK		22353	31603
RESIDENTIAL	6	DE VILLIERS AVENUE	ROSEBANK		22354	31604
RESIDENTIAL	8	DE VILLIERS AVENUE	ROSEBANK		22355	31605
RESIDENTIAL	10	DE VILLIERS AVENUE	ROSEBANK		22356	31606
RESIDENTIAL	12	DE VILLIERS AVENUE	ROSEBANK		22357	31607
RESIDENTIAL	14	DE VILLIERS AVENUE	ROSEBANK		22358	31608
RESIDENTIAL	16	DE VILLIERS AVENUE	ROSEBANK		22359	31609
RESIDENTIAL	18	DE VILLIERS AVENUE	ROSEBANK		22360	31610
RESIDENTIAL	20	DE VILLIERS AVENUE	ROSEBANK		22361	31611
RESIDENTIAL	22	DE VILLIERS AVENUE	ROSEBANK		22362	31612
RESIDENTIAL	24	DE VILLIERS AVENUE	ROSEBANK		22363	31613
RESIDENTIAL	26	DE VILLIERS AVENUE	ROSEBANK		22364	31614
NON-RESIDENTIAL	20B	DE VILLIERS AVENUE	ROSEBANK		22608	31953
RESIDENTIAL	2A	DE VILLIERS AVENUE	ROSEBANK		22351	31601
NON-RESIDENTIAL	55	DURBAN ROAD	MOWBRAY		20752	28984
NON-RESIDENTIAL	61	DURBAN ROAD	MOWBRAY	1	20762	28994
NON-RESIDENTIAL	61	DURBAN ROAD	MOWBRAY	2	20762	28994
NON-RESIDENTIAL	61	DURBAN ROAD	MOWBRAY	3	20762	28994
NON-RESIDENTIAL	61	DURBAN ROAD	MOWBRAY	4	20762	28994
NON-RESIDENTIAL	61	DURBAN ROAD	MOWBRAY	5	20762	28994
NON-RESIDENTIAL	61	DURBAN ROAD	MOWBRAY	6	20762	28994
NON-RESIDENTIAL	61	DURBAN ROAD	MOWBRAY	7	20762	28994
NON-RESIDENTIAL	61	DURBAN ROAD	MOWBRAY	8	20762	28994
NON-RESIDENTIAL	61	DURBAN ROAD	MOWBRAY	9	20762	28994
NON-RESIDENTIAL	61	DURBAN ROAD	MOWBRAY	10	20762	28994

Category	St No.	Street	Suburb	Unit No	LIS Key	ERF No
NON-RESIDENTIAL	61	DURBAN ROAD	MOWBRAY	11	20762	28994
NON-RESIDENTIAL	61	DURBAN ROAD	MOWBRAY	12	20762	28994
NON-RESIDENTIAL	61	DURBAN ROAD	MOWBRAY	13	20762	28994
NON-RESIDENTIAL	61	DURBAN ROAD	MOWBRAY	14	20762	28994
NON-RESIDENTIAL	61	DURBAN ROAD	MOWBRAY	15	20762	28994
NON-RESIDENTIAL	61	DURBAN ROAD	MOWBRAY	16	20762	28994
RESIDENTIAL	61	DURBAN ROAD	MOWBRAY	17	20762	28994
RESIDENTIAL	61	DURBAN ROAD	MOWBRAY	18	20762	28994
RESIDENTIAL	61	DURBAN ROAD	MOWBRAY	19	20762	28994
RESIDENTIAL	61	DURBAN ROAD	MOWBRAY	20	20762	28994
RESIDENTIAL	61	DURBAN ROAD	MOWBRAY	21	20762	28994
RESIDENTIAL	61	DURBAN ROAD	MOWBRAY	22	20762	28994
RESIDENTIAL	61	DURBAN ROAD	MOWBRAY	23	20762	28994
RESIDENTIAL	61	DURBAN ROAD	MOWBRAY	24	20762	28994
RESIDENTIAL	61	DURBAN ROAD	MOWBRAY	25	20762	28994
RESIDENTIAL	61	DURBAN ROAD	MOWBRAY	26	20762	28994
RESIDENTIAL	61	DURBAN ROAD	MOWBRAY	27	20762	28994
RESIDENTIAL	61	DURBAN ROAD	MOWBRAY	28	20762	28994
RESIDENTIAL	61	DURBAN ROAD	MOWBRAY	29	20762	28994
RESIDENTIAL	61	DURBAN ROAD	MOWBRAY	30	20762	28994
RESIDENTIAL	61	DURBAN ROAD	MOWBRAY	31	20762	28994
RESIDENTIAL	61	DURBAN ROAD	MOWBRAY	32	20762	28994
RESIDENTIAL	61	DURBAN ROAD	MOWBRAY	33	20762	28994
RESIDENTIAL	61	DURBAN ROAD	MOWBRAY	34	20762	28994
NON-RESIDENTIAL	72	DURBAN ROAD	MOWBRAY		22272	31502
NON-RESIDENTIAL	74	DURBAN ROAD	MOWBRAY		22271	31501
RESIDENTIAL	74	DURBAN ROAD	MOWBRAY		22271	31501
RESIDENTIAL	74	DURBAN ROAD	MOWBRAY		22271	31501
NON-RESIDENTIAL	80	DURBAN ROAD	MOWBRAY		22281	31511
NON-RESIDENTIAL	83	DURBAN ROAD	MOWBRAY		110941	152321
NON-RESIDENTIAL	84	DURBAN ROAD	MOWBRAY		22667	32055
RESIDENTIAL	86	DURBAN ROAD	MOWBRAY	1	22282	31512
RESIDENTIAL	86	DURBAN ROAD	MOWBRAY	2	22282	31512
RESIDENTIAL	86	DURBAN ROAD	MOWBRAY	3	22282	31512
RESIDENTIAL	86	DURBAN ROAD	MOWBRAY	4	22282	31512
RESIDENTIAL	86	DURBAN ROAD	MOWBRAY	5	22282	31512



Category	St No.	Street	Suburb	Unit No	LIS Key	ERF No
RESIDENTIAL	86	DURBAN ROAD	MOWBRAY	6	22282	31512
NON-RESIDENTIAL	94	DURBAN ROAD	MOWBRAY		22286	31516
RESIDENTIAL	1	GLEDHOLT ROAD	MOWBRAY		21872	30441
RESIDENTIAL	2	GLEDHOLT ROAD	MOWBRAY		20906	29221
RESIDENTIAL	3	GLEDHOLT ROAD	MOWBRAY		20905	29220
RESIDENTIAL	4	GLEDHOLT ROAD	MOWBRAY		20904	29219
RESIDENTIAL	5	GLEDHOLT ROAD	MOWBRAY		20903	29218
RESIDENTIAL	1	GLOUCESTER ROAD	MOWBRAY		20737	28964
RESIDENTIAL	2	GLOUCESTER ROAD	MOWBRAY		20755	28987
RESIDENTIAL	3	GLOUCESTER ROAD	MOWBRAY		20736	28963
RESIDENTIAL	4	GLOUCESTER ROAD	MOWBRAY		20756	28988
RESIDENTIAL	5	GLOUCESTER ROAD	MOWBRAY		20735	28962
RESIDENTIAL	7	GLOUCESTER ROAD	MOWBRAY		20734	28961
RESIDENTIAL	8	GLOUCESTER ROAD	MOWBRAY		20765	28999
RESIDENTIAL	9	GLOUCESTER ROAD	MOWBRAY		20741	28968
NON-RESIDENTIAL	1A	GLOUCESTER ROAD	MOWBRAY		206437	30300
NON-RESIDENTIAL	1B	GLOUCESTER ROAD	MOWBRAY		329441	28929
NON-RESIDENTIAL	1D	GLOUCESTER ROAD	MOWBRAY		345120	159233
NON-RESIDENTIAL	1E	GLOUCESTER ROAD	MOWBRAY		333256	28938
NON-RESIDENTIAL	1G	GLOUCESTER ROAD	MOWBRAY		345121	159234
NON-RESIDENTIAL	2A	GLOUCESTER ROAD	MOWBRAY		20750	28979
RESIDENTIAL	2A	GLOUCESTER ROAD	MOWBRAY		20750	28979
NON-RESIDENTIAL	2A	GLOUCESTER ROAD	MOWBRAY		20750	28979
NON-RESIDENTIAL	2A	GLOUCESTER ROAD	MOWBRAY		20750	28979
NON-RESIDENTIAL	2B	GLOUCESTER ROAD	MOWBRAY		20753	28985
NON-RESIDENTIAL	2D	GLOUCESTER ROAD	MOWBRAY		329442	28929
RESIDENTIAL	3	HARE STREET	MOWBRAY		22087	31152
RESIDENTIAL	3	HARE STREET	MOWBRAY		22087	31152
RESIDENTIAL	3	HARE STREET	MOWBRAY		22087	31152
NON-RESIDENTIAL	16	HILL PARK LANE	MOWBRAY		86753233	32182
NON-RESIDENTIAL	20	HILL PARK LANE	MOWBRAY		22323	31573
RESIDENTIAL	1	HILTON ROAD	MOWBRAY		20838	29140
RESIDENTIAL	2	HILTON ROAD	MOWBRAY		20846	29148
NON-RESIDENTIAL	3	HILTON ROAD	MOWBRAY		20837	29139
RESIDENTIAL	4	HILTON ROAD	MOWBRAY		20847	29149
RESIDENTIAL	5	HILTON ROAD	MOWBRAY		20836	29138

Category	St No.	Street	Suburb	Unit No	LIS Key	ERF No
RESIDENTIAL	7	HILTON ROAD	MOWBRAY		21036	29381
RESIDENTIAL	9	HILTON ROAD	MOWBRAY		21035	29380
RESIDENTIAL	14	HILTON ROAD	MOWBRAY		21024	29368
RESIDENTIAL	18	HILTON ROAD	MOWBRAY		20839	29141
RESIDENTIAL	20	HILTON ROAD	MOWBRAY		21012	29353
RESIDENTIAL	14A	HILTON ROAD	MOWBRAY		21023	29367
RESIDENTIAL	2	HURLEY ROAD	MOWBRAY		20899	29214
RESIDENTIAL	3	HURLEY ROAD	MOWBRAY		20895	29209
RESIDENTIAL	4	HURLEY ROAD	MOWBRAY		20900	29215
RESIDENTIAL	6	HURLEY ROAD	MOWBRAY		441344	165388
RESIDENTIAL	9	HURLEY ROAD	MOWBRAY		20945	29264
RESIDENTIAL	10	HURLEY ROAD	MOWBRAY		20922	29241
RESIDENTIAL	11	HURLEY ROAD	MOWBRAY		20944	29263
RESIDENTIAL	12	HURLEY ROAD	MOWBRAY		20923	29242
RESIDENTIAL	13	HURLEY ROAD	MOWBRAY		20943	29262
RESIDENTIAL	14	HURLEY ROAD	MOWBRAY		20924	29243
RESIDENTIAL	15	HURLEY ROAD	MOWBRAY		21904	30478
RESIDENTIAL	18	HURLEY ROAD	MOWBRAY		20926	29245
NON-RESIDENTIAL	5	KENSINGTON ROAD	MOWBRAY		20761	28993
RESIDENTIAL	6	KENSINGTON ROAD	MOWBRAY		20757	28989
RESIDENTIAL	8	KENSINGTON ROAD	MOWBRAY		20764	28998
NON-RESIDENTIAL	9	KENSINGTON ROAD	MOWBRAY		20760	28992
RESIDENTIAL	10	KENSINGTON ROAD	MOWBRAY		20742	28969
RESIDENTIAL	11	KENSINGTON ROAD	MOWBRAY		20759	28991
RESIDENTIAL	12	KENSINGTON ROAD	MOWBRAY		20739	28966
RESIDENTIAL	13	KENSINGTON ROAD	MOWBRAY		20758	28990
RESIDENTIAL	15	KENSINGTON ROAD	MOWBRAY		20733	28960
RESIDENTIAL	17	KENSINGTON ROAD	MOWBRAY		20732	28959
RESIDENTIAL	8A	KENSINGTON ROAD	MOWBRAY		20766	29000
RESIDENTIAL	3	KENT STREET	MOWBRAY		22662	32045
NON-RESIDENTIAL	4	KENT STREET	MOWBRAY		22542	31860
RESIDENTIAL	2	KEW ROAD	MOWBRAY		21824	30376
RESIDENTIAL	4	KEW ROAD	MOWBRAY		21823	30375
RESIDENTIAL	6	KEW ROAD	MOWBRAY		21822	30374
RESIDENTIAL	8	KEW ROAD	MOWBRAY		21835	30389
RESIDENTIAL	9	KEW ROAD	MOWBRAY		21033	29378

Category	St No.	Street	Suburb	Unit No	LIS Key	ERF No
RESIDENTIAL	10	KEW ROAD	MOWBRAY		21834	30388
RESIDENTIAL	12	KEW ROAD	MOWBRAY		21051	29397
RESIDENTIAL	14	KEW ROAD	MOWBRAY		21052	29398
RESIDENTIAL	15	KEW ROAD	MOWBRAY		20830	29132
RESIDENTIAL	17	KEW ROAD	MOWBRAY		20829	29131
RESIDENTIAL	18	KEW ROAD	MOWBRAY		20822	29123
RESIDENTIAL	19	KEW ROAD	MOWBRAY		20828	29130
RESIDENTIAL	20	KEW ROAD	MOWBRAY		20823	29124
RESIDENTIAL	21	KEW ROAD	MOWBRAY		20827	29129
RESIDENTIAL	2	KINGS ROAD	MOWBRAY		20771	29006
RESIDENTIAL	3	KINGS ROAD	MOWBRAY		20744	28971
RESIDENTIAL	4	KINGS ROAD	MOWBRAY		20772	29007
RESIDENTIAL	6	KINGS ROAD	MOWBRAY		21927	30522
RESIDENTIAL	1	KINGSTON ROAD	MOWBRAY		22668	32058
RESIDENTIAL	2	KINGSTON ROAD	MOWBRAY		22543	31861
RESIDENTIAL	3	KINGSTON ROAD	MOWBRAY		22584	31911
RESIDENTIAL	4	KINGSTON ROAD	MOWBRAY		22544	31862
RESIDENTIAL	5	KINGSTON ROAD	MOWBRAY		22583	31910
RESIDENTIAL	10	KINGSTON ROAD	ROSEBANK	1	22613	31961
RESIDENTIAL	10	KINGSTON ROAD	ROSEBANK	2	22613	31961
RESIDENTIAL	10	KINGSTON ROAD	ROSEBANK	3	22613	31961
RESIDENTIAL	10	KINGSTON ROAD	ROSEBANK	4	22613	31961
RESIDENTIAL	10	KINGSTON ROAD	ROSEBANK	5	22613	31961
RESIDENTIAL	10	KINGSTON ROAD	ROSEBANK	6	22613	31961
RESIDENTIAL	10	KINGSTON ROAD	ROSEBANK	7	22613	31961
RESIDENTIAL	10	KINGSTON ROAD	ROSEBANK	8	22613	31961
RESIDENTIAL	10	KINGSTON ROAD	ROSEBANK	9	22613	31961
RESIDENTIAL	10	KINGSTON ROAD	ROSEBANK	10	22613	31961
RESIDENTIAL	10	KINGSTON ROAD	ROSEBANK	11	22613	31961
RESIDENTIAL	10	KINGSTON ROAD	ROSEBANK	12	22613	31961
RESIDENTIAL	10	KINGSTON ROAD	ROSEBANK	13	22613	31961
RESIDENTIAL	10	KINGSTON ROAD	ROSEBANK	14	22613	31961
RESIDENTIAL	10	KINGSTON ROAD	ROSEBANK	15	22613	31961
RESIDENTIAL	10	KINGSTON ROAD	ROSEBANK	16	22613	31961
RESIDENTIAL	10	KINGSTON ROAD	ROSEBANK	17	22613	31961
RESIDENTIAL	10	KINGSTON ROAD	ROSEBANK	18	22613	31961

Category	St No.	Street	Suburb	Unit No	LIS Key	ERF No
RESIDENTIAL	4	KLIPFONTEIN ROAD	MOWBRAY		22553	31874
RESIDENTIAL	6	KLIPFONTEIN ROAD	MOWBRAY		22554	31875
RESIDENTIAL	10	KLIPFONTEIN ROAD	MOWBRAY		22555	31876
NON-RESIDENTIAL	12	KLIPFONTEIN ROAD	MOWBRAY		22561	31882
RESIDENTIAL	18	KLIPFONTEIN ROAD	MOWBRAY		22565	31886
RESIDENTIAL	20	KLIPFONTEIN ROAD	MOWBRAY		22566	31887
RESIDENTIAL	21	KLIPFONTEIN ROAD	MOWBRAY		32293	44327
RESIDENTIAL	22	KLIPFONTEIN ROAD	MOWBRAY		22567	31888
RESIDENTIAL	23	KLIPFONTEIN ROAD	MOWBRAY		32296	44330
RESIDENTIAL	25	KLIPFONTEIN ROAD	MOWBRAY		32297	44331
RESIDENTIAL	18A	KLIPFONTEIN ROAD	MOWBRAY		22564	31885
RESIDENTIAL	7	KOWIE ROAD	MOWBRAY		21021	29365
RESIDENTIAL	8	KOWIE ROAD	MOWBRAY		21796	30342
RESIDENTIAL	9	KOWIE ROAD	MOWBRAY		21020	29364
RESIDENTIAL	10	KOWIE ROAD	MOWBRAY		21797	30343
RESIDENTIAL	11	KOWIE ROAD	MOWBRAY		21019	29363
RESIDENTIAL	12	KOWIE ROAD	MOWBRAY		21798	30344
RESIDENTIAL	14	KOWIE ROAD	MOWBRAY		21799	30345
RESIDENTIAL	15	KOWIE ROAD	MOWBRAY		21029	29373
RESIDENTIAL	16	KOWIE ROAD	MOWBRAY		21807	30354
RESIDENTIAL	2	LANCASTER ROAD	MOWBRAY		21030	29374
RESIDENTIAL	8	LANCASTER ROAD	MOWBRAY		21046	29392
RESIDENTIAL	9	LANCASTER ROAD	MOWBRAY		21041	29386
RESIDENTIAL	10	LANCASTER ROAD	MOWBRAY		21043	29389
RESIDENTIAL	11	LANCASTER ROAD	MOWBRAY		21040	29385
RESIDENTIAL	13	LANCASTER ROAD	MOWBRAY		21058	29405
RESIDENTIAL	15	LANCASTER ROAD	MOWBRAY		21057	29404
RESIDENTIAL	17	LANCASTER ROAD	MOWBRAY		21056	29403
RESIDENTIAL	18	LANCASTER ROAD	MOWBRAY		79236833	178758
RESIDENTIAL	20	LANCASTER ROAD	MOWBRAY		79236542	178756
RESIDENTIAL	22	LANCASTER ROAD	MOWBRAY		79236771	178757
RESIDENTIAL	24	LANCASTER ROAD	MOWBRAY		21062	29410
RESIDENTIAL	1	LANDSEER ROAD	MOWBRAY		22297	31527
RESIDENTIAL	3	LANDSEER ROAD	MOWBRAY		22320	31550
RESIDENTIAL	4	LANDSEER ROAD	MOWBRAY		22273	31503
RESIDENTIAL	5	LANDSEER ROAD	MOWBRAY		22329	31578

Category	St No.	Street	Suburb	Unit No	LIS Key	ERF No
RESIDENTIAL	6	LANDSEER ROAD	MOWBRAY		22274	31504
RESIDENTIAL	7	LANDSEER ROAD	MOWBRAY		22349	31599
RESIDENTIAL	8	LANDSEER ROAD	MOWBRAY		22275	31505
RESIDENTIAL	9	LANDSEER ROAD	MOWBRAY		22348	31598
RESIDENTIAL	10	LANDSEER ROAD	MOWBRAY		22276	31506
RESIDENTIAL	12	LANDSEER ROAD	MOWBRAY		22277	31507
RESIDENTIAL	14	LANDSEER ROAD	MOWBRAY		22278	31508
RESIDENTIAL	16	LANDSEER ROAD	MOWBRAY		22279	31509
RESIDENTIAL	18	LANDSEER ROAD	MOWBRAY		107348	146640
RESIDENTIAL	20	LANDSEER ROAD	MOWBRAY		22325	31574
RESIDENTIAL	22	LANDSEER ROAD	MOWBRAY		22326	31575
RESIDENTIAL	24	LANDSEER ROAD	MOWBRAY		22327	31576
RESIDENTIAL	1	LANGTON ROAD	MOWBRAY		22296	31526
RESIDENTIAL	2	LANGTON ROAD	MOWBRAY		22298	31528
RESIDENTIAL	3	LANGTON ROAD	MOWBRAY		22295	31525
RESIDENTIAL	4	LANGTON ROAD	MOWBRAY		22299	31529
RESIDENTIAL	5	LANGTON ROAD	MOWBRAY		22294	31524
RESIDENTIAL	6	LANGTON ROAD	MOWBRAY		22300	31530
RESIDENTIAL	7	LANGTON ROAD	MOWBRAY		22293	31523
RESIDENTIAL	8	LANGTON ROAD	MOWBRAY		22301	31531
RESIDENTIAL	9	LANGTON ROAD	MOWBRAY		22292	31522
RESIDENTIAL	10	LANGTON ROAD	MOWBRAY		994798	172254
RESIDENTIAL	11	LANGTON ROAD	MOWBRAY		22291	31521
RESIDENTIAL	12	LANGTON ROAD	MOWBRAY		1049895	173853
RESIDENTIAL	13	LANGTON ROAD	MOWBRAY		22290	31520
RESIDENTIAL	15	LANGTON ROAD	MOWBRAY		22289	31519
RESIDENTIAL	16	LANGTON ROAD	MOWBRAY	1	22321	31556
RESIDENTIAL	16	LANGTON ROAD	MOWBRAY	2	22321	31556
RESIDENTIAL	16	LANGTON ROAD	MOWBRAY	3	22321	31556
RESIDENTIAL	16	LANGTON ROAD	MOWBRAY	4	22321	31556
RESIDENTIAL	16	LANGTON ROAD	MOWBRAY	5	22321	31556
RESIDENTIAL	16	LANGTON ROAD	MOWBRAY	6	22321	31556
RESIDENTIAL	16	LANGTON ROAD	MOWBRAY	7	22321	31556
RESIDENTIAL	16	LANGTON ROAD	MOWBRAY	8	22321	31556
RESIDENTIAL	16	LANGTON ROAD	MOWBRAY	9	22321	31556
RESIDENTIAL	16	LANGTON ROAD	MOWBRAY	10	22321	31556

Category	St No.	Street	Suburb	Unit No	LIS Key	ERF No
RESIDENTIAL	16	LANGTON ROAD	MOWBRAY	11	22321	31556
NON-RESIDENTIAL	16	LANGTON ROAD	MOWBRAY		22321	31556
NON-RESIDENTIAL	17	LANGTON ROAD	MOWBRAY		22288	31518
NON-RESIDENTIAL	18	LANGTON ROAD	MOWBRAY		22304	31534
RESIDENTIAL	20	LANGTON ROAD	MOWBRAY		22305	31535
RESIDENTIAL	22	LANGTON ROAD	MOWBRAY		22306	31536
RESIDENTIAL	12A	LANGTON ROAD	MOWBRAY		1049896	173854
RESIDENTIAL	8A	LANGTON ROAD	MOWBRAY		22302	31532
RESIDENTIAL	35	LIESBEEK ROAD	ROSEBANK		22389	31660
RESIDENTIAL	36	LIESBEEK ROAD	ROSEBANK		22441	31737
RESIDENTIAL	37	LIESBEEK ROAD	ROSEBANK		22388	31659
RESIDENTIAL	39	LIESBEEK ROAD	ROSEBANK		22387	31658
RESIDENTIAL	43	LIESBEEK ROAD	ROSEBANK		22384	31655
RESIDENTIAL	44	LIESBEEK ROAD	ROSEBANK		22393	31669
RESIDENTIAL	46	LIESBEEK ROAD	ROSEBANK		22394	31670
RESIDENTIAL	47	LIESBEEK ROAD	ROSEBANK		22380	31649
RESIDENTIAL	48	LIESBEEK ROAD	ROSEBANK		22395	31671
RESIDENTIAL	49	LIESBEEK ROAD	ROSEBANK	1	22612	31958
RESIDENTIAL	49	LIESBEEK ROAD	ROSEBANK	2	22612	31958
RESIDENTIAL	49	LIESBEEK ROAD	ROSEBANK	3	22612	31958
RESIDENTIAL	49	LIESBEEK ROAD	ROSEBANK	4	22612	31958
RESIDENTIAL	49	LIESBEEK ROAD	ROSEBANK	5	22612	31958
RESIDENTIAL	49	LIESBEEK ROAD	ROSEBANK	6	22612	31958
RESIDENTIAL	49	LIESBEEK ROAD	ROSEBANK	7	22612	31958
RESIDENTIAL	49	LIESBEEK ROAD	ROSEBANK	8	22612	31958
RESIDENTIAL	49	LIESBEEK ROAD	ROSEBANK	9	22612	31958
RESIDENTIAL	49	LIESBEEK ROAD	ROSEBANK	10	22612	31958
RESIDENTIAL	49	LIESBEEK ROAD	ROSEBANK	11	22612	31958
RESIDENTIAL	49	LIESBEEK ROAD	ROSEBANK	12	22612	31958
RESIDENTIAL	49	LIESBEEK ROAD	ROSEBANK	13	22612	31958
RESIDENTIAL	49	LIESBEEK ROAD	ROSEBANK	14	22612	31958
RESIDENTIAL	49	LIESBEEK ROAD	ROSEBANK	15	22612	31958
RESIDENTIAL	49	LIESBEEK ROAD	ROSEBANK	16	22612	31958
RESIDENTIAL	49	LIESBEEK ROAD	ROSEBANK	17	22612	31958
RESIDENTIAL	49	LIESBEEK ROAD	ROSEBANK	18	22612	31958
RESIDENTIAL	49	LIESBEEK ROAD	ROSEBANK	19	22612	31958

Category	St No.	Street	Suburb	Unit No	LIS Key	ERF No
RESIDENTIAL	49	LIESBEEK ROAD	ROSEBANK	20	22612	31958
RESIDENTIAL	49	LIESBEEK ROAD	ROSEBANK	21	22612	31958
RESIDENTIAL	49	LIESBEEK ROAD	ROSEBANK	22	22612	31958
RESIDENTIAL	49	LIESBEEK ROAD	ROSEBANK	23	22612	31958
RESIDENTIAL	49	LIESBEEK ROAD	ROSEBANK	24	22612	31958
RESIDENTIAL	49	LIESBEEK ROAD	ROSEBANK	25	22612	31958
RESIDENTIAL	49	LIESBEEK ROAD	ROSEBANK	26	22612	31958
RESIDENTIAL	49	LIESBEEK ROAD	ROSEBANK	27	22612	31958
RESIDENTIAL	49	LIESBEEK ROAD	ROSEBANK	28	22612	31958
RESIDENTIAL	49	LIESBEEK ROAD	ROSEBANK	29	22612	31958
RESIDENTIAL	49	LIESBEEK ROAD	ROSEBANK	30	22612	31958
RESIDENTIAL	50	LIESBEEK ROAD	ROSEBANK		24019203	176814
RESIDENTIAL	52	LIESBEEK ROAD	ROSEBANK		22397	31674
RESIDENTIAL	54	LIESBEEK ROAD	ROSEBANK		22398	31675
RESIDENTIAL	56	LIESBEEK ROAD	ROSEBANK		22399	31676
RESIDENTIAL	58	LIESBEEK ROAD	ROSEBANK		22400	31677
RESIDENTIAL	60	LIESBEEK ROAD	ROSEBANK		22401	31678
RESIDENTIAL	62	LIESBEEK ROAD	ROSEBANK		22402	31680
RESIDENTIAL	64	LIESBEEK ROAD	ROSEBANK		22404	31683
RESIDENTIAL	68	LIESBEEK ROAD	ROSEBANK		22405	31684
RESIDENTIAL	35A	LIESBEEK ROAD	ROSEBANK		22698	32101
RESIDENTIAL	41A	LIESBEEK ROAD	ROSEBANK		22386	31657
RESIDENTIAL	47B	LIESBEEK ROAD	ROSEBANK		22379	31648
RESIDENTIAL	64A	LIESBEEK ROAD	ROSEBANK	1	22403	31682
NON-RESIDENTIAL	64A	LIESBEEK ROAD	ROSEBANK		22403	31682
RESIDENTIAL	3	LOWER HILTON ROAD	MOWBRAY		21025	29369
RESIDENTIAL	92	MAIN ROAD	MOWBRAY		20535	28639
RESIDENTIAL	94	MAIN ROAD	MOWBRAY		20534	28638
NON-RESIDENTIAL	110	MAIN ROAD	MOWBRAY		20503	28592
RESIDENTIAL	110	MAIN ROAD	MOWBRAY		20503	28592
RESIDENTIAL	3	MONTREAL AVENUE	MOWBRAY		20724	28942
RESIDENTIAL	7	MONTREAL AVENUE	MOWBRAY		20843	29145
RESIDENTIAL	1	MONTREAL ROAD	MOWBRAY		213845	154332
RESIDENTIAL	2	MONTREAL ROAD	MOWBRAY		20723	28941
RESIDENTIAL	2	MONTREAL ROAD	MOWBRAY		213844	154331
RESIDENTIAL	3	MONTREAL ROAD	MOWBRAY		213843	154330



Category	St No.	Street	Suburb	Unit No	LIS Key	ERF No
RESIDENTIAL	4	MONTREAL ROAD	MOWBRAY		213842	154329
RESIDENTIAL	5	MONTREAL ROAD	MOWBRAY		20817	29116
RESIDENTIAL	5	MONTREAL ROAD	MOWBRAY		213841	154328
RESIDENTIAL	6	MONTREAL ROAD	MOWBRAY		213840	154327
RESIDENTIAL	7	MONTREAL ROAD	MOWBRAY		213839	154326
RESIDENTIAL	8	MONTREAL ROAD	MOWBRAY		213838	154325
RESIDENTIAL	9	MONTREAL ROAD	MOWBRAY		20818	29119
RESIDENTIAL	9	MONTREAL ROAD	MOWBRAY		213837	154324
RESIDENTIAL	11	MONTREAL ROAD	MOWBRAY		111651	154335
RESIDENTIAL	12	MONTREAL ROAD	MOWBRAY		213847	154334
RESIDENTIAL	13	MONTREAL ROAD	MOWBRAY		213846	154333
NON-RESIDENTIAL	19	MONTREAL ROAD	MOWBRAY		19287	26445
NON-RESIDENTIAL	26	MONTREAL ROAD	MOWBRAY		21770	30273
RESIDENTIAL	26	MONTREAL ROAD	MOWBRAY		21770	30273
NON-RESIDENTIAL	26	MONTREAL ROAD	MOWBRAY		21770	30273
NON-RESIDENTIAL	27	MONTREAL ROAD	MOWBRAY		20085	27786
RESIDENTIAL	29	MONTREAL ROAD	MOWBRAY		213848	154336
NON-RESIDENTIAL	37	MONTREAL ROAD	MOWBRAY		111652	154337
RESIDENTIAL	1	MUSWELL HILL ROAD	MOWBRAY		20976	29305
RESIDENTIAL	2	MUSWELL HILL ROAD	MOWBRAY		20871	29183
RESIDENTIAL	3	MUSWELL HILL ROAD	MOWBRAY		20989	29319
RESIDENTIAL	4	MUSWELL HILL ROAD	MOWBRAY		20872	29184
RESIDENTIAL	5	MUSWELL HILL ROAD	MOWBRAY		20994	29329
RESIDENTIAL	6	MUSWELL HILL ROAD	MOWBRAY		20873	29185
RESIDENTIAL	7	MUSWELL HILL ROAD	MOWBRAY		20988	29318
RESIDENTIAL	8	MUSWELL HILL ROAD	MOWBRAY		20874	29186
RESIDENTIAL	9	MUSWELL HILL ROAD	MOWBRAY		20963	29292
RESIDENTIAL	10	MUSWELL HILL ROAD	MOWBRAY		20884	29198
RESIDENTIAL	11	MUSWELL HILL ROAD	MOWBRAY		20975	29304
RESIDENTIAL	12	MUSWELL HILL ROAD	MOWBRAY		20885	29199
RESIDENTIAL	13	MUSWELL HILL ROAD	MOWBRAY		20974	29303
RESIDENTIAL	14	MUSWELL HILL ROAD	MOWBRAY		20893	29208
RESIDENTIAL	15	MUSWELL HILL ROAD	MOWBRAY		20936	29255
RESIDENTIAL	16	MUSWELL HILL ROAD	MOWBRAY		985988	171541
RESIDENTIAL	17	MUSWELL HILL ROAD	MOWBRAY		20947	29266
RESIDENTIAL	18	MUSWELL HILL ROAD	MOWBRAY		985987	171540

Category	St No.	Street	Suburb	Unit No	LIS Key	ERF No
RESIDENTIAL	19	MUSWELL HILL ROAD	MOWBRAY		20946	29265
RESIDENTIAL	20	MUSWELL HILL ROAD	MOWBRAY		985986	171539
RESIDENTIAL	21	MUSWELL HILL ROAD	MOWBRAY		1050646	173813
RESIDENTIAL	22	MUSWELL HILL ROAD	MOWBRAY		46638763	30583
RESIDENTIAL	25	MUSWELL HILL ROAD	MOWBRAY		1042496	173812
NON-RESIDENTIAL	16A	MUSWELL HILL ROAD	MOWBRAY		20902	29217
RESIDENTIAL	8A	MUSWELL HILL ROAD	MOWBRAY		20883	29197
RESIDENTIAL	4	NORFOLK LANE	ROSEBANK		22481	31785
RESIDENTIAL	6	NORFOLK LANE	ROSEBANK		22477	31782
RESIDENTIAL	8	NORFOLK LANE	ROSEBANK		22476	31781
RESIDENTIAL	10	NORFOLK LANE	ROSEBANK		22702	32105
NON-RESIDENTIAL	12	NORFOLK LANE	ROSEBANK		299820	32118
RESIDENTIAL	12	NORFOLK LANE	ROSEBANK		22496	31801
RESIDENTIAL	13	NORFOLK LANE	ROSEBANK		22487	31792
RESIDENTIAL	38	NORFOLK LANE	ROSEBANK		22495	31800
RESIDENTIAL	38A	NORFOLK LANE	ROSEBANK		22687	32082
RESIDENTIAL	1	PARK ROAD	MOWBRAY		22545	31863
RESIDENTIAL	7	PARK ROAD	MOWBRAY		22582	31909
RESIDENTIAL	9	PARK ROAD	MOWBRAY		22581	31908
RESIDENTIAL	11	PARK ROAD	MOWBRAY		22580	31907
RESIDENTIAL	13	PARK ROAD	MOWBRAY		22579	31906
RESIDENTIAL	15	PARK ROAD	MOWBRAY		22578	31905
RESIDENTIAL	2	PARK ROAD	ROSEBANK		22535	31849
RESIDENTIAL	4	PARK ROAD	ROSEBANK		22691	32090
RESIDENTIAL	8	PARK ROAD	ROSEBANK		22690	32089
RESIDENTIAL	10	PARK ROAD	ROSEBANK		22585	31912
RESIDENTIAL	12	PARK ROAD	ROSEBANK		110245	150847
RESIDENTIAL	14	PARK ROAD	ROSEBANK		22586	31913
RESIDENTIAL	16	PARK ROAD	ROSEBANK		22587	31914
RESIDENTIAL	1	PILLANS ROAD	ROSEBANK		22440	31728
RESIDENTIAL	2	PILLANS ROAD	ROSEBANK		22450	31754
RESIDENTIAL	3	PILLANS ROAD	ROSEBANK		22439	31727
RESIDENTIAL	4	PILLANS ROAD	ROSEBANK		22610	31956
RESIDENTIAL	5	PILLANS ROAD	ROSEBANK		22438	31726
RESIDENTIAL	6	PILLANS ROAD	ROSEBANK		22611	31957
RESIDENTIAL	7	PILLANS ROAD	ROSEBANK		22437	31725

Category	St No.	Street	Suburb	Unit No	LIS Key	ERF No
RESIDENTIAL	8	PILLANS ROAD	ROSEBANK		22452	31757
RESIDENTIAL	9	PILLANS ROAD	ROSEBANK		22435	31723
RESIDENTIAL	10	PILLANS ROAD	ROSEBANK		22462	31767
RESIDENTIAL	11	PILLANS ROAD	ROSEBANK		22434	31722
RESIDENTIAL	12	PILLANS ROAD	ROSEBANK		22463	31768
RESIDENTIAL	13	PILLANS ROAD	ROSEBANK		22433	31721
RESIDENTIAL	14	PILLANS ROAD	ROSEBANK		22464	31769
RESIDENTIAL	15	PILLANS ROAD	ROSEBANK		22432	31720
RESIDENTIAL	16	PILLANS ROAD	ROSEBANK		22465	31770
RESIDENTIAL	17	PILLANS ROAD	ROSEBANK		22521	31829
RESIDENTIAL	18	PILLANS ROAD	ROSEBANK		22466	31771
RESIDENTIAL	19	PILLANS ROAD	ROSEBANK		22520	31828
RESIDENTIAL	20	PILLANS ROAD	ROSEBANK		22467	31772
RESIDENTIAL	21	PILLANS ROAD	ROSEBANK		1063007	32029
RESIDENTIAL	22	PILLANS ROAD	ROSEBANK		61923454	177850
RESIDENTIAL	24	PILLANS ROAD	ROSEBANK		22471	31776
RESIDENTIAL	26	PILLANS ROAD	ROSEBANK		16521290	176417
RESIDENTIAL	28	PILLANS ROAD	ROSEBANK		22474	31779
RESIDENTIAL	30	PILLANS ROAD	ROSEBANK		22475	31780
RESIDENTIAL	32	PILLANS ROAD	ROSEBANK		22478	31783
RESIDENTIAL	34	PILLANS ROAD	ROSEBANK		22479	31784
RESIDENTIAL	36	PILLANS ROAD	ROSEBANK		22461	31766
RESIDENTIAL	24A	PILLANS ROAD	ROSEBANK		22470	31775
RESIDENTIAL	8A	PILLANS ROAD	ROSEBANK		22451	31756
RESIDENTIAL	9A	PILLANS ROAD	ROSEBANK		22436	31724
RESIDENTIAL	9B	PILLANS ROAD	ROSEBANK		22665	32053
RESIDENTIAL	1	PRIORY ROAD	MOWBRAY		20775	29011
RESIDENTIAL	3	PRIORY ROAD	MOWBRAY		206375	29010
RESIDENTIAL	5	PRIORY ROAD	MOWBRAY		20774	29009
RESIDENTIAL	6	PRIORY ROAD	MOWBRAY		20786	29027
RESIDENTIAL	7	PRIORY ROAD	MOWBRAY		107377	146676
RESIDENTIAL	5A	PRIORY ROAD	MOWBRAY		107376	146675
NON-RESIDENTIAL	3	RAAPENBERG ROAD	MOWBRAY		21864	30428
RESIDENTIAL	8	RAAPENBERG ROAD	MOWBRAY		20792	29083
RESIDENTIAL	9	RAAPENBERG ROAD	MOWBRAY		20782	29020
RESIDENTIAL	10	RAAPENBERG ROAD	MOWBRAY		20793	29084

Category	St No.	Street	Suburb	Unit No	LIS Key	ERF No
RESIDENTIAL	11	RAAPENBERG ROAD	MOWBRAY		20781	29019
RESIDENTIAL	12	RAAPENBERG ROAD	MOWBRAY		20811	29102
NON-RESIDENTIAL	13	RAAPENBERG ROAD	MOWBRAY		20780	29018
RESIDENTIAL	14	RAAPENBERG ROAD	MOWBRAY		20795	29086
RESIDENTIAL	16	RAAPENBERG ROAD	MOWBRAY		20796	29087
RESIDENTIAL	18	RAAPENBERG ROAD	MOWBRAY		20797	29088
RESIDENTIAL	19	RAAPENBERG ROAD	MOWBRAY		20790	29031
RESIDENTIAL	20	RAAPENBERG ROAD	MOWBRAY		20867	29179
RESIDENTIAL	21	RAAPENBERG ROAD	MOWBRAY		20789	29030
RESIDENTIAL	22	RAAPENBERG ROAD	MOWBRAY		20868	29180
RESIDENTIAL	23	RAAPENBERG ROAD	MOWBRAY		20788	29029
RESIDENTIAL	24	RAAPENBERG ROAD	MOWBRAY		20869	29181
RESIDENTIAL	25	RAAPENBERG ROAD	MOWBRAY		20860	29165
RESIDENTIAL	26	RAAPENBERG ROAD	MOWBRAY		20870	29182
RESIDENTIAL	27	RAAPENBERG ROAD	MOWBRAY		20859	29164
RESIDENTIAL	28	RAAPENBERG ROAD	MOWBRAY		20977	29306
RESIDENTIAL	29	RAAPENBERG ROAD	MOWBRAY		21840	30395
RESIDENTIAL	30	RAAPENBERG ROAD	MOWBRAY		20978	29307
RESIDENTIAL	31	RAAPENBERG ROAD	MOWBRAY		21841	30396
RESIDENTIAL	32	RAAPENBERG ROAD	MOWBRAY		20979	29308
RESIDENTIAL	33	RAAPENBERG ROAD	MOWBRAY		21842	30397
RESIDENTIAL	34	RAAPENBERG ROAD	MOWBRAY		48967174	30570
RESIDENTIAL	35	RAAPENBERG ROAD	MOWBRAY		21801	30347
RESIDENTIAL	37	RAAPENBERG ROAD	MOWBRAY		21011	29350
RESIDENTIAL	35A	RAAPENBERG ROAD	MOWBRAY		21800	30346
RESIDENTIAL	35B	RAAPENBERG ROAD	MOWBRAY		21802	30348
RESIDENTIAL	1	RALEIGH ROAD	MOWBRAY		21055	29402
RESIDENTIAL	2	RALEIGH ROAD	MOWBRAY		21048	29394
RESIDENTIAL	3	RALEIGH ROAD	MOWBRAY		21061	29409
RESIDENTIAL	4	RALEIGH ROAD	MOWBRAY		21049	29395
RESIDENTIAL	5	RALEIGH ROAD	MOWBRAY		21060	29408
RESIDENTIAL	6	RALEIGH ROAD	MOWBRAY		21050	29396
RESIDENTIAL	7	RALEIGH ROAD	MOWBRAY		21039	29384
RESIDENTIAL	9	RALEIGH ROAD	MOWBRAY		21042	29387
RESIDENTIAL	12	RALEIGH ROAD	MOWBRAY		21034	29379
RESIDENTIAL	14	RALEIGH ROAD	MOWBRAY		108572	148065

Category	St No.	Street	Suburb	Unit No	LIS Key	ERF No
RESIDENTIAL	16	RALEIGH ROAD	MOWBRAY		21013	29356
RESIDENTIAL	18	RALEIGH ROAD	MOWBRAY		21014	29357
RESIDENTIAL	20	RALEIGH ROAD	MOWBRAY		21015	29358
RESIDENTIAL	22	RALEIGH ROAD	MOWBRAY		20997	29333
RESIDENTIAL	23	RALEIGH ROAD	MOWBRAY		21018	29362
RESIDENTIAL	24	RALEIGH ROAD	MOWBRAY		20998	29334
RESIDENTIAL	25	RALEIGH ROAD	MOWBRAY		21004	29340
RESIDENTIAL	26	RALEIGH ROAD	MOWBRAY		20999	29335
RESIDENTIAL	27	RALEIGH ROAD	MOWBRAY		21007	29344
RESIDENTIAL	28	RALEIGH ROAD	MOWBRAY		21000	29336
RESIDENTIAL	29	RALEIGH ROAD	MOWBRAY		21006	29343
RESIDENTIAL	31	RALEIGH ROAD	MOWBRAY		21005	29342
RESIDENTIAL	1A	RALEIGH ROAD	MOWBRAY		1073330	174247
RESIDENTIAL	1	RICHMOND ROAD	MOWBRAY		20787	29028
RESIDENTIAL	4	RICHMOND ROAD	MOWBRAY		20861	29166
RESIDENTIAL	6	RICHMOND ROAD	MOWBRAY		20862	29167
RESIDENTIAL	7	RICHMOND ROAD	MOWBRAY		21928	30523
RESIDENTIAL	8	RICHMOND ROAD	MOWBRAY		20863	29168
RESIDENTIAL	10	RICHMOND ROAD	MOWBRAY		20864	29169
RESIDENTIAL	11	RICHMOND ROAD	MOWBRAY		20745	28972
RESIDENTIAL	12	RICHMOND ROAD	MOWBRAY	1	20865	29170
RESIDENTIAL	12	RICHMOND ROAD	MOWBRAY	2	20865	29170
RESIDENTIAL	12	RICHMOND ROAD	MOWBRAY	3	20865	29170
RESIDENTIAL	12	RICHMOND ROAD	MOWBRAY	4	20865	29170
RESIDENTIAL	12	RICHMOND ROAD	MOWBRAY	5	20865	29170
RESIDENTIAL	12	RICHMOND ROAD	MOWBRAY	6	20865	29170
RESIDENTIAL	13	RICHMOND ROAD	MOWBRAY		20746	28973
RESIDENTIAL	14	RICHMOND ROAD	MOWBRAY		20845	29147
RESIDENTIAL	15	RICHMOND ROAD	MOWBRAY		20747	28974
RESIDENTIAL	16	RICHMOND ROAD	MOWBRAY		20844	29146
RESIDENTIAL	20	RICHMOND ROAD	MOWBRAY		20840	29142
RESIDENTIAL	22	RICHMOND ROAD	MOWBRAY		20841	29143
RESIDENTIAL	24	RICHMOND ROAD	MOWBRAY		20842	29144
RESIDENTIAL	25	RICHMOND ROAD	MOWBRAY		20727	28945
RESIDENTIAL	26	RICHMOND ROAD	MOWBRAY		20824	29125
RESIDENTIAL	27	RICHMOND ROAD	MOWBRAY		20726	28944

Category	St No.	Street	Suburb	Unit No	LIS Key	ERF No
RESIDENTIAL	29	RICHMOND ROAD	MOWBRAY		20725	28943
RESIDENTIAL	30	RICHMOND ROAD	MOWBRAY		20825	29126
RESIDENTIAL	32	RICHMOND ROAD	MOWBRAY		20826	29127
RESIDENTIAL	25A	RICHMOND ROAD	MOWBRAY		20728	28948
RESIDENTIAL	6A	RICHMOND ROAD	MOWBRAY		21821	30373
RESIDENTIAL	6B	RICHMOND ROAD	MOWBRAY		20853	29157
RESIDENTIAL	1	ROBOR CRESCENT	MOWBRAY		32284	44316
RESIDENTIAL	2	ROBOR CRESCENT	MOWBRAY		32292	44326
RESIDENTIAL	3	ROBOR CRESCENT	MOWBRAY		32285	44317
RESIDENTIAL	4	ROBOR CRESCENT	MOWBRAY		32294	44328
NON-RESIDENTIAL	5	ROBOR CRESCENT	MOWBRAY		32288	44320
RESIDENTIAL	6	ROBOR CRESCENT	MOWBRAY		32295	44329
RESIDENTIAL	7	ROBOR CRESCENT	MOWBRAY		32289	44321
RESIDENTIAL	8	ROBOR CRESCENT	MOWBRAY		32298	44332
RESIDENTIAL	9	ROBOR CRESCENT	MOWBRAY		32290	44322
RESIDENTIAL	10	ROBOR CRESCENT	MOWBRAY		32299	44333
RESIDENTIAL	11	ROBOR CRESCENT	MOWBRAY		32291	44323
RESIDENTIAL	13	ROBOR CRESCENT	MOWBRAY		32300	44334
RESIDENTIAL	15	ROBOR CRESCENT	MOWBRAY		32301	44335
NON-RESIDENTIAL	15	ROBOR CRESCENT	MOWBRAY		32301	44335
NON-RESIDENTIAL	17	ROBOR CRESCENT	MOWBRAY		207319	44338
RESIDENTIAL	15B	ROBOR CRESCENT	MOWBRAY		32282	44312
RESIDENTIAL	1	ROSEBERRY ROAD	MOWBRAY		20805	29096
NON-RESIDENTIAL	2	ROSEBERRY ROAD	MOWBRAY		20812	29106
RESIDENTIAL	3	ROSEBERRY ROAD	MOWBRAY		20804	29095
NON-RESIDENTIAL	4	ROSEBERRY ROAD	MOWBRAY		20813	29107
RESIDENTIAL	5	ROSEBERRY ROAD	MOWBRAY		20803	29094
RESIDENTIAL	6	ROSEBERRY ROAD	MOWBRAY		20814	29108
NON-RESIDENTIAL	7	ROSEBERRY ROAD	MOWBRAY		20802	29093
RESIDENTIAL	8	ROSEBERRY ROAD	MOWBRAY		20891	29205
RESIDENTIAL	9	ROSEBERRY ROAD	MOWBRAY		20889	29203
RESIDENTIAL	10	ROSEBERRY ROAD	MOWBRAY		21826	30379
RESIDENTIAL	11	ROSEBERRY ROAD	MOWBRAY		20888	29202
RESIDENTIAL	12	ROSEBERRY ROAD	MOWBRAY		20892	29207
RESIDENTIAL	13	ROSEBERRY ROAD	MOWBRAY		20886	29200
RESIDENTIAL	14	ROSEBERRY ROAD	MOWBRAY		20937	29256

Category	St No.	Street	Suburb	Unit No	LIS Key	ERF No
RESIDENTIAL	16	ROSEBERRY ROAD	MOWBRAY		20938	29257
RESIDENTIAL	17	ROSEBERRY ROAD	MOWBRAY		20973	29302
RESIDENTIAL	18	ROSEBERRY ROAD	MOWBRAY		20939	29258
RESIDENTIAL	19	ROSEBERRY ROAD	MOWBRAY		20972	29301
RESIDENTIAL	20	ROSEBERRY ROAD	MOWBRAY		20948	29267
RESIDENTIAL	21	ROSEBERRY ROAD	MOWBRAY		20971	29300
RESIDENTIAL	23	ROSEBERRY ROAD	MOWBRAY		20970	29299
RESIDENTIAL	24	ROSEBERRY ROAD	MOWBRAY		20949	29269
RESIDENTIAL	25	ROSEBERRY ROAD	MOWBRAY		21925	30518
RESIDENTIAL	26	ROSEBERRY ROAD	MOWBRAY		20950	29270
RESIDENTIAL	27	ROSEBERRY ROAD	MOWBRAY		110424	151185
RESIDENTIAL	28	ROSEBERRY ROAD	MOWBRAY		20951	29271
RESIDENTIAL	29	ROSEBERRY ROAD	MOWBRAY		21926	30519
RESIDENTIAL	30	ROSEBERRY ROAD	MOWBRAY		20952	29272
RESIDENTIAL	31	ROSEBERRY ROAD	MOWBRAY		110423	151184
RESIDENTIAL	32	ROSEBERRY ROAD	MOWBRAY		206388	29273
RESIDENTIAL	33	ROSEBERRY ROAD	MOWBRAY		110214	150798
RESIDENTIAL	13A	ROSEBERRY ROAD	MOWBRAY		20887	29201
RESIDENTIAL	3	ROXANA ROAD	MOWBRAY		21010	29349
RESIDENTIAL	5	ROXANA ROAD	MOWBRAY		21009	29348
RESIDENTIAL	7	ROXANA ROAD	MOWBRAY		21008	29347
RESIDENTIAL	9	ROXANA ROAD	MOWBRAY		21028	29372
RESIDENTIAL	11	ROXANA ROAD	MOWBRAY		21027	29371
RESIDENTIAL	13	ROXANA ROAD	MOWBRAY		21026	29370
RESIDENTIAL	15	ROXANA ROAD	MOWBRAY		21045	29391
RESIDENTIAL	17	ROXANA ROAD	MOWBRAY		21044	29390
RESIDENTIAL	19	ROXANA ROAD	MOWBRAY		21065	29416
RESIDENTIAL	21	ROXANA ROAD	MOWBRAY		79234937	178755
RESIDENTIAL	2	SAWKINS ROAD	MOWBRAY		20992	29322
RESIDENTIAL	10	SAWKINS ROAD	MOWBRAY		20953	29274
RESIDENTIAL	12	SAWKINS ROAD	MOWBRAY		20954	29275
RESIDENTIAL	14	SAWKINS ROAD	MOWBRAY		20955	29276
RESIDENTIAL	16	SAWKINS ROAD	MOWBRAY		20957	29281
RESIDENTIAL	18	SAWKINS ROAD	MOWBRAY		20956	29280
RESIDENTIAL	22	SAWKINS ROAD	MOWBRAY		20917	29235
RESIDENTIAL	23	SAWKINS ROAD	MOWBRAY		32287	44319



Category	St No.	Street	Suburb	Unit No	LIS Key	ERF No
RESIDENTIAL	24	SAWKINS ROAD	MOWBRAY		20919	29237
RESIDENTIAL	25	SAWKINS ROAD	MOWBRAY		32283	44315
RESIDENTIAL	26	SAWKINS ROAD	MOWBRAY		20920	29238
RESIDENTIAL	30	SAWKINS ROAD	MOWBRAY		22569	31891
RESIDENTIAL	34	SAWKINS ROAD	MOWBRAY		22571	31893
RESIDENTIAL	36	SAWKINS ROAD	MOWBRAY		22572	31894
NON-RESIDENTIAL	18B	SAWKINS ROAD	MOWBRAY		32272	44305
RESIDENTIAL	23A	SAWKINS ROAD	MOWBRAY		32286	44318
RESIDENTIAL	2A	SAWKINS ROAD	MOWBRAY		20993	29324
RESIDENTIAL	32	SAWKINS ROAD	ROSEBANK		22570	31892
RESIDENTIAL	38	SAWKINS ROAD	ROSEBANK	1	329926	159305
RESIDENTIAL	38	SAWKINS ROAD	ROSEBANK	2	329926	159305
RESIDENTIAL	38	SAWKINS ROAD	ROSEBANK	3	329926	159305
RESIDENTIAL	38	SAWKINS ROAD	ROSEBANK	4	329926	159305
RESIDENTIAL	38	SAWKINS ROAD	ROSEBANK	5	329926	159305
RESIDENTIAL	38	SAWKINS ROAD	ROSEBANK	6	329926	159305
RESIDENTIAL	38	SAWKINS ROAD	ROSEBANK	7	329926	159305
RESIDENTIAL	38	SAWKINS ROAD	ROSEBANK	8	329926	159305
RESIDENTIAL	38	SAWKINS ROAD	ROSEBANK	9	329926	159305
RESIDENTIAL	38	SAWKINS ROAD	ROSEBANK	10	329926	159305
RESIDENTIAL	38	SAWKINS ROAD	ROSEBANK	11	329926	159305
RESIDENTIAL	38	SAWKINS ROAD	ROSEBANK	12	329926	159305
RESIDENTIAL	38	SAWKINS ROAD	ROSEBANK	13	329926	159305
RESIDENTIAL	38	SAWKINS ROAD	ROSEBANK	14	329926	159305
RESIDENTIAL	38	SAWKINS ROAD	ROSEBANK	15	329926	159305
RESIDENTIAL	38	SAWKINS ROAD	ROSEBANK	16	329926	159305
RESIDENTIAL	38	SAWKINS ROAD	ROSEBANK	17	329926	159305
RESIDENTIAL	38	SAWKINS ROAD	ROSEBANK	18	329926	159305
RESIDENTIAL	38	SAWKINS ROAD	ROSEBANK	19	329926	159305
RESIDENTIAL	38	SAWKINS ROAD	ROSEBANK	20	329926	159305
RESIDENTIAL	38	SAWKINS ROAD	ROSEBANK	21	329926	159305
RESIDENTIAL	38	SAWKINS ROAD	ROSEBANK	22	329926	159305
RESIDENTIAL	38	SAWKINS ROAD	ROSEBANK	23	329926	159305
RESIDENTIAL	44	SAWKINS ROAD	ROSEBANK	1	22596	31923
RESIDENTIAL	44	SAWKINS ROAD	ROSEBANK	2	22596	31923
RESIDENTIAL	44	SAWKINS ROAD	ROSEBANK	3	22596	31923

Category	St No.	Street	Suburb	Unit No	LIS Key	ERF No
RESIDENTIAL	44	SAWKINS ROAD	ROSEBANK	4	22596	31923
RESIDENTIAL	44	SAWKINS ROAD	ROSEBANK	5	22596	31923
RESIDENTIAL	44	SAWKINS ROAD	ROSEBANK	6	22596	31923
RESIDENTIAL	44	SAWKINS ROAD	ROSEBANK	7	22596	31923
RESIDENTIAL	44	SAWKINS ROAD	ROSEBANK	8	22596	31923
RESIDENTIAL	44	SAWKINS ROAD	ROSEBANK	9	22596	31923
RESIDENTIAL	44	SAWKINS ROAD	ROSEBANK	10	22596	31923
RESIDENTIAL	44	SAWKINS ROAD	ROSEBANK	11	22596	31923
RESIDENTIAL	44	SAWKINS ROAD	ROSEBANK	12	22596	31923
RESIDENTIAL	44	SAWKINS ROAD	ROSEBANK	13	22596	31923
RESIDENTIAL	44	SAWKINS ROAD	ROSEBANK	14	22596	31923
RESIDENTIAL	44	SAWKINS ROAD	ROSEBANK	15	22596	31923
RESIDENTIAL	44	SAWKINS ROAD	ROSEBANK	16	22596	31923
RESIDENTIAL	44	SAWKINS ROAD	ROSEBANK	17	22596	31923
NON-RESIDENTIAL	44	SAWKINS ROAD	ROSEBANK		22596	31923
NON-RESIDENTIAL	50	SAWKINS ROAD	ROSEBANK		22525	31833
RESIDENTIAL	1	SMITH STREET	ROSEBANK		22703	32108
RESIDENTIAL	3	SMITH STREET	ROSEBANK		22445	31747
RESIDENTIAL	5	SMITH STREET	ROSEBANK		22634	31999
RESIDENTIAL	7	SMITH STREET	ROSEBANK		22444	31745
RESIDENTIAL	9	SMITH STREET	ROSEBANK		22443	31742
RESIDENTIAL	10	SMITH STREET	ROSEBANK		22418	31697
RESIDENTIAL	11	SMITH STREET	ROSEBANK		22442	31741
RESIDENTIAL	12	SMITH STREET	ROSEBANK		108724	148370
RESIDENTIAL	13	SMITH STREET	ROSEBANK		22446	31750
RESIDENTIAL	14	SMITH STREET	ROSEBANK		109549	149768
RESIDENTIAL	10A	SMITH STREET	ROSEBANK		22419	31698
RESIDENTIAL	12B	SMITH STREET	ROSEBANK		22385	31656
RESIDENTIAL	1	ST GEORGE STREET	ROSEBANK		412126	32148
RESIDENTIAL	2	ST GEORGE STREET	ROSEBANK		412125	32149
RESIDENTIAL	3	ST GEORGE STREET	ROSEBANK		412124	32150
RESIDENTIAL	4	ST GEORGE STREET	ROSEBANK		412123	32151
RESIDENTIAL	5	ST GEORGE STREET	ROSEBANK		412122	32152
RESIDENTIAL	6	ST GEORGE STREET	ROSEBANK		412121	32153
RESIDENTIAL	7	ST GEORGE STREET	ROSEBANK		412120	32154
RESIDENTIAL	8	ST GEORGE STREET	ROSEBANK		412119	32155

Category	St No.	Street	Suburb	Unit No	LIS Key	ERF No
RESIDENTIAL	9	ST GEORGE STREET	ROSEBANK		412118	32156
RESIDENTIAL	10	ST GEORGE STREET	ROSEBANK		412117	32157
RESIDENTIAL	11	ST GEORGE STREET	ROSEBANK		412116	32158
RESIDENTIAL	12	ST GEORGE STREET	ROSEBANK		412115	32159
RESIDENTIAL	13	ST GEORGE STREET	ROSEBANK		412114	32160
RESIDENTIAL	14	ST GEORGE STREET	ROSEBANK		412113	32161
RESIDENTIAL	15	ST GEORGE STREET	ROSEBANK		412112	32173
RESIDENTIAL	16	ST GEORGE STREET	ROSEBANK		412111	32172
RESIDENTIAL	17	ST GEORGE STREET	ROSEBANK		412110	32171
RESIDENTIAL	18	ST GEORGE STREET	ROSEBANK		412109	32170
RESIDENTIAL	19	ST GEORGE STREET	ROSEBANK		412108	32169
RESIDENTIAL	20	ST GEORGE STREET	ROSEBANK		412107	32168
RESIDENTIAL	21	ST GEORGE STREET	ROSEBANK		412106	32167
RESIDENTIAL	22	ST GEORGE STREET	ROSEBANK		412105	32166
RESIDENTIAL	23	ST GEORGE STREET	ROSEBANK		412104	32165
RESIDENTIAL	24	ST GEORGE STREET	ROSEBANK		412103	32164
RESIDENTIAL	25	ST GEORGE STREET	ROSEBANK		412102	32163
RESIDENTIAL	26	ST GEORGE STREET	ROSEBANK		412101	32162
RESIDENTIAL	27	ST GEORGE STREET	ROSEBANK		412089	32136
RESIDENTIAL	28	ST GEORGE STREET	ROSEBANK		412090	32137
RESIDENTIAL	29	ST GEORGE STREET	ROSEBANK		412091	32138
RESIDENTIAL	30	ST GEORGE STREET	ROSEBANK		412092	32139
RESIDENTIAL	31	ST GEORGE STREET	ROSEBANK		412093	32140
RESIDENTIAL	32	ST GEORGE STREET	ROSEBANK		412094	32141
RESIDENTIAL	33	ST GEORGE STREET	ROSEBANK		412095	32142
RESIDENTIAL	34	ST GEORGE STREET	ROSEBANK		412096	32143
RESIDENTIAL	35	ST GEORGE STREET	ROSEBANK		412097	32144
RESIDENTIAL	36	ST GEORGE STREET	ROSEBANK		412098	32145
RESIDENTIAL	37	ST GEORGE STREET	ROSEBANK		412099	32146
RESIDENTIAL	38	ST GEORGE STREET	ROSEBANK		412100	32147
RESIDENTIAL	3	SURBITON ROAD	ROSEBANK		22515	31823
RESIDENTIAL	5	SURBITON ROAD	ROSEBANK		22524	31832
RESIDENTIAL	7	SURBITON ROAD	ROSEBANK		22523	31831
RESIDENTIAL	9	SURBITON ROAD	ROSEBANK		22522	31830
RESIDENTIAL	10	SURBITON ROAD	ROSEBANK		22431	31719
RESIDENTIAL	3A	SURBITON ROAD	ROSEBANK		84811481	32183

Category	St No.	Street	Suburb	Unit No	LIS Key	ERF No
RESIDENTIAL	2	SURREY ROAD	MOWBRAY		20808	29099
RESIDENTIAL	4	SURREY ROAD	MOWBRAY		20807	29098
RESIDENTIAL	6	SURREY ROAD	MOWBRAY		20806	29097
RESIDENTIAL	2A	SURREY ROAD	MOWBRAY		1043009	173701
RESIDENTIAL	2B	SURREY ROAD	MOWBRAY		1043010	173702
RESIDENTIAL	2C	SURREY ROAD	MOWBRAY		441245	163997
RESIDENTIAL	2D	SURREY ROAD	MOWBRAY		804922	163998
RESIDENTIAL	1	THICKET ROAD	MOWBRAY		22559	31880
RESIDENTIAL	2	THICKET ROAD	MOWBRAY		22548	31866
RESIDENTIAL	3	THICKET ROAD	MOWBRAY		22558	31879
NON-RESIDENTIAL	4	THICKET ROAD	MOWBRAY		22549	31867
RESIDENTIAL	5	THICKET ROAD	MOWBRAY		88818750	180106
NON-RESIDENTIAL	6	THICKET ROAD	MOWBRAY		22551	31869
RESIDENTIAL	7	THICKET ROAD	MOWBRAY		22556	31877
RESIDENTIAL	8	THICKET ROAD	MOWBRAY		22682	32073
RESIDENTIAL	10	THICKET ROAD	MOWBRAY		22576	31903
RESIDENTIAL	11	THICKET ROAD	MOWBRAY		22562	31883
NON-RESIDENTIAL	14	THICKET ROAD	MOWBRAY		22577	31904
NON-RESIDENTIAL	4A	THICKET ROAD	MOWBRAY		22550	31868
RESIDENTIAL	5A	THICKET ROAD	MOWBRAY		88818752	180107
RESIDENTIAL	1	TWICKENHAM ROAD	MOWBRAY		20858	29162
RESIDENTIAL	2	TWICKENHAM ROAD	MOWBRAY		21001	29337
RESIDENTIAL	3	TWICKENHAM ROAD	MOWBRAY		20856	29160
RESIDENTIAL	4	TWICKENHAM ROAD	MOWBRAY		21002	29338
RESIDENTIAL	5	TWICKENHAM ROAD	MOWBRAY		20854	29158
RESIDENTIAL	6	TWICKENHAM ROAD	MOWBRAY		21003	29339
RESIDENTIAL	7	TWICKENHAM ROAD	MOWBRAY		91731980	180562
RESIDENTIAL	8	TWICKENHAM ROAD	MOWBRAY		20996	29332
RESIDENTIAL	9	TWICKENHAM ROAD	MOWBRAY		20866	29176
RESIDENTIAL	10	TWICKENHAM ROAD	MOWBRAY		21022	29366
RESIDENTIAL	11	TWICKENHAM ROAD	MOWBRAY		20850	29152
RESIDENTIAL	12	TWICKENHAM ROAD	MOWBRAY		21809	30358
RESIDENTIAL	14	TWICKENHAM ROAD	MOWBRAY		21016	29359
RESIDENTIAL	15	TWICKENHAM ROAD	MOWBRAY		20849	29151
RESIDENTIAL	16	TWICKENHAM ROAD	MOWBRAY		21017	29360
RESIDENTIAL	17	TWICKENHAM ROAD	MOWBRAY		20848	29150

Category	St No.	Street	Suburb	Unit No	LIS Key	ERF No
RESIDENTIAL	18	TWICKENHAM ROAD	MOWBRAY		108571	148064
RESIDENTIAL	19	TWICKENHAM ROAD	MOWBRAY		20835	29137
RESIDENTIAL	21	TWICKENHAM ROAD	MOWBRAY		20834	29136
RESIDENTIAL	23	TWICKENHAM ROAD	MOWBRAY		20833	29135
RESIDENTIAL	24	TWICKENHAM ROAD	MOWBRAY		21037	29382
RESIDENTIAL	25	TWICKENHAM ROAD	MOWBRAY		20832	29134
RESIDENTIAL	26	TWICKENHAM ROAD	MOWBRAY		21038	29383
RESIDENTIAL	27	TWICKENHAM ROAD	MOWBRAY		20831	29133
RESIDENTIAL	28	TWICKENHAM ROAD	MOWBRAY		21032	29377
RESIDENTIAL	30	TWICKENHAM ROAD	MOWBRAY		21053	29399
RESIDENTIAL	31	TWICKENHAM ROAD	MOWBRAY		20821	29122
RESIDENTIAL	32	TWICKENHAM ROAD	MOWBRAY		21054	29400
RESIDENTIAL	33	TWICKENHAM ROAD	MOWBRAY		20820	29121
RESIDENTIAL	34	TWICKENHAM ROAD	MOWBRAY		21047	29393
RESIDENTIAL	35	TWICKENHAM ROAD	MOWBRAY		20819	29120
RESIDENTIAL	3A	TWICKENHAM ROAD	MOWBRAY		20857	29161
RESIDENTIAL	5A	TWICKENHAM ROAD	MOWBRAY		20855	29159
RESIDENTIAL	61	UPPER LIESBEEK ROAD	ROSEBANK		22531	31843
RESIDENTIAL	63	UPPER LIESBEEK ROAD	ROSEBANK		63632459	177927
RESIDENTIAL	65	UPPER LIESBEEK ROAD	ROSEBANK		22599	31926
RESIDENTIAL	67	UPPER LIESBEEK ROAD	ROSEBANK		22598	31925
NON-RESIDENTIAL	69	UPPER LIESBEEK ROAD	ROSEBANK		22597	31924
NON-RESIDENTIAL	70	UPPER LIESBEEK ROAD	ROSEBANK		22526	31834
RESIDENTIAL	63A	UPPER LIESBEEK ROAD	ROSEBANK		73238089	178601
RESIDENTIAL	63B	UPPER LIESBEEK ROAD	ROSEBANK		73238222	178602
NON-RESIDENTIAL	21	VICTORIA ROAD	MOWBRAY		20588	28750
RESIDENTIAL	2	VREDENBURG AVENUE	ROSEBANK		22390	31661
RESIDENTIAL	4	VREDENBURG AVENUE	ROSEBANK		22391	31662
RESIDENTIAL	6	VREDENBURG AVENUE	ROSEBANK		22392	31663
RESIDENTIAL	8	VREDENBURG AVENUE	ROSEBANK		22370	31634
RESIDENTIAL	10	VREDENBURG AVENUE	ROSEBANK		22371	31635
RESIDENTIAL	12	VREDENBURG AVENUE	ROSEBANK		22372	31636
RESIDENTIAL	14	VREDENBURG AVENUE	ROSEBANK		22373	31637
RESIDENTIAL	16	VREDENBURG AVENUE	ROSEBANK		22350	31600
RESIDENTIAL	3	VREDENBURG CIRCUS	ROSEBANK		22374	31638
RESIDENTIAL	5	VREDENBURG CIRCUS	ROSEBANK		22375	31639

Category	St No.	Street	Suburb	Unit No	LIS Key	ERF No
RESIDENTIAL	7	VREDENBURG CIRCUS	ROSEBANK		22376	31640
RESIDENTIAL	9	VREDENBURG CIRCUS	ROSEBANK		22377	31641
RESIDENTIAL	11	VREDENBURG CIRCUS	ROSEBANK		22382	31651
RESIDENTIAL	13	VREDENBURG CIRCUS	ROSEBANK		22383	31652
RESIDENTIAL	15	VREDENBURG CIRCUS	ROSEBANK		22368	31632
RESIDENTIAL	17	VREDENBURG CIRCUS	ROSEBANK		22369	31633
RESIDENTIAL	11A	VREDENBURG CIRCUS	ROSEBANK		22378	31642
NON-RESIDENTIAL	13B	VREDENBURG CIRCUS	ROSEBANK		22381	31650
RESIDENTIAL	2	YORK LANE	ROSEBANK		109620	150019
RESIDENTIAL	2A	YORK LANE	ROSEBANK		22449	31753